

\$2,500,000 - 10357 82 Av Nw Nw, Edmonton

MLS® #E4330122

\$2,500,000

Bedroom, Bathroom, 12,175 sqft

Office on 0.00 Acres

Strathcona Junction, Edmonton, AB

Fantastic opportunity to own a 12,175 sq.ft. character retail/office building along Whyte Avenue. - 2-storey building demised into 6 tenant spaces. Building has partial occupancy giving potential to an owner/user looking to occupy or an investor to lease up vacant spaces. - All units including common areas have been renovated within the last 5 years. - Building recently underwent upgraded facade, as well as upgrades to HVAC

Built in 1911

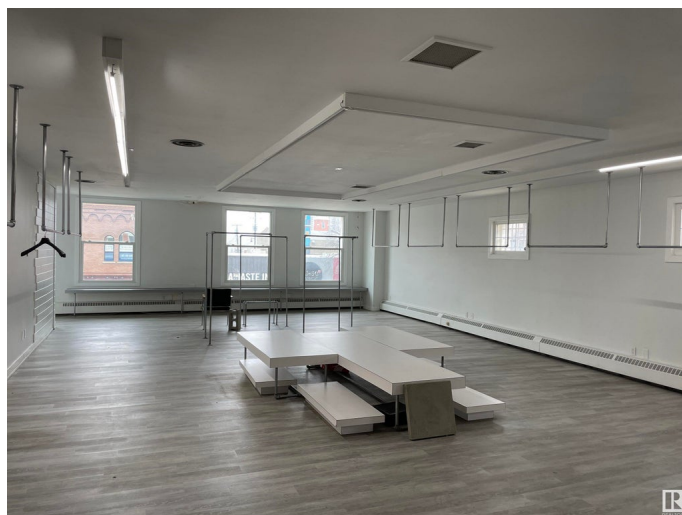
Essential Information

| | |
|----------------|-------------|
| MLS® # | E4330122 |
| Price | \$2,500,000 |
| Square Footage | 12,175 |
| Acres | 0.00 |
| Year Built | 1911 |
| Type | Office |

Community Information

| | |
|-------------|---------------------|
| Address | 10357 82 Av Nw Nw |
| Area | Edmonton |
| Subdivision | Strathcona Junction |
| City | Edmonton |
| Province | AB |
| Postal Code | T6E 1Z9 |

Exterior



Construction Brick/Masonry

Additional Information

Date Listed March 6th, 2023

Zoning DC1

DATA IS DEEMED RELIABLE BUT IS NOT GUARANTEED ACCURATE BY THE REALTORS® ASSOCIATION OF EDMONTON. COPYRIGHT 2024 BY THE REALTORS® ASSOCIATION OF EDMONTON. ALL RIGHTS RESERVED.Trademarks are owned or controlled by the Canadian Real Estate Association (CREA) and identify real estate professionals who are members of CREA (REALTOR®, REALTORS®) and/or the quality of services they provide (MLS®, Multiple Listing Service®)

Listing information last updated on May 16th, 2024 at 7:31pm MDT