

## \$1,450,000 - N/A, Rural Parkland County

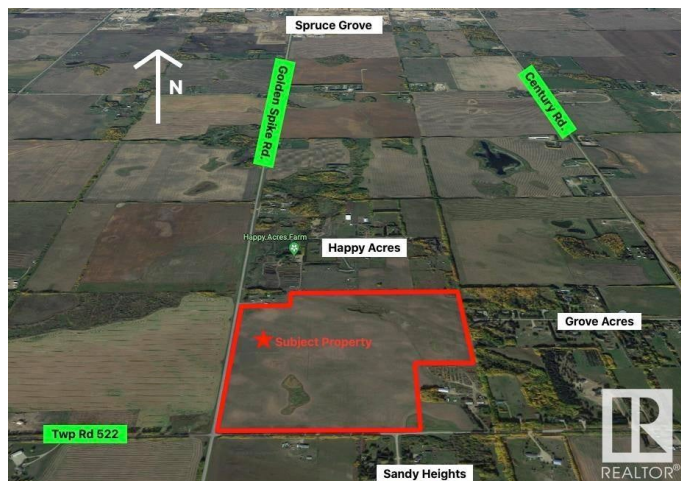
MLS® #E4410119

**\$1,450,000**

0 Bedroom, 0.00 Bathroom,  
Rural on 126.94 Acres

None, Rural Parkland County, AB

This 126.94 +/- acre property is located along Golden Spike Road (Range Road 273) and Township Road 522 (northeast corner of intersection) just South of Spruce Grove city limits. Access to property is paved road with easy access to Highways 16, 16A and 627. Just 5 minutes to Spruce Grove and 10 minutes to Stony Plain. This land is generally flat, with some low lying areas and currently being grain farmed. Power and gas lines are accessible at the property line. Future multi-parcel subdivision possibilities (rezoning would be required) or potential for subdivision of one additional lot under current zoning. Zoned Agricultural General District.



### Essential Information

|           |                 |
|-----------|-----------------|
| MLS® #    | E4410119        |
| Price     | \$1,450,000     |
| Bathrooms | 0.00            |
| Acres     | 126.94          |
| Type      | Rural           |
| Sub-Type  | Vacant Lot/Land |
| Status    | Active          |

### Community Information

|         |                       |
|---------|-----------------------|
| Address | N/A                   |
| Area    | Rural Parkland County |

|             |                       |
|-------------|-----------------------|
| Subdivision | None                  |
| City        | Rural Parkland County |
| County      | ALBERTA               |
| Province    | AB                    |
| Postal Code | T7Y 2V7               |

## Exterior

Exterior Features    See Remarks

## Additional Information

|                |                    |
|----------------|--------------------|
| Date Listed    | October 11th, 2024 |
| Days on Market | 322                |
| Zoning         | Zone 90            |

DATA IS DEEMED RELIABLE BUT IS NOT GUARANTEED ACCURATE BY THE REALTORS® ASSOCIATION OF EDMONTON. COPYRIGHT 2025 BY THE REALTORS® ASSOCIATION OF EDMONTON. ALL RIGHTS RESERVED. Trademarks are owned or controlled by the Canadian Real Estate Association (CREA) and identify real estate professionals who are members of CREA (REALTOR®, REALTORS®) and/or the quality of services they provide (MLS®, Multiple Listing Service®)

Listing information last updated on August 29th, 2025 at 12:47pm MDT