

\$1,425,000 - 111 Pinnacle Terrace, Rural Sturgeon County

MLS® #E4421204

\$1,425,000

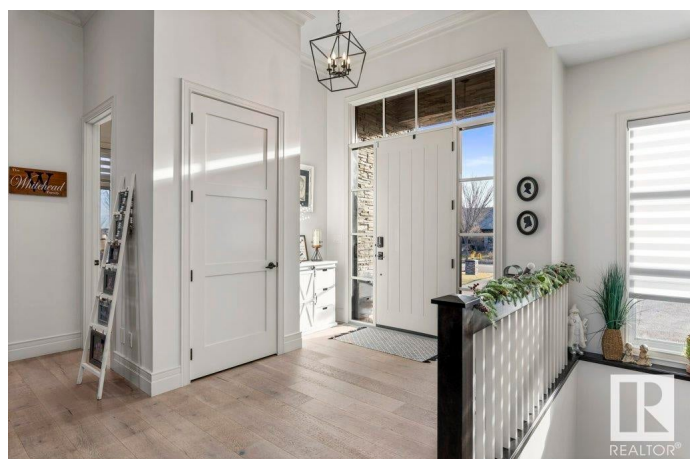
6 Bedroom, 3.50 Bathroom, 2,628 sqft

Rural on 0.50 Acres

Pinnacle Ridge Estates, Rural Sturgeon County, AB

Welcome to 111 Pinnacle Terrace, this 6 bedroom BUNGALOW offers a blend of spaciousness, luxury and sophisticated design! The main floor features a large open concept living room with GAS FIREPLACE, gourmet kitchen with a large central island, perfect for meal prep, casual dining, or entertaining guests, GAS RANGE, TWO PANTRIES and modern tile backsplash. There are TWO MAIN FLOOR BEDROOMS. The primary bedroom is a private sanctuary, spacious and serene. Large windows bring in plenty of natural light and the ENSUITE has a freestanding soaking tub, a large glass-enclosed walk-in shower, a double vanity and WALK IN CLOSET with custom built-ins. The LOFT has TWO bedrooms and a 5pce bathroom-perfect kids space! The basement is FULLY FINISHED and features TWO BAR AREAS, and additional two bedrooms, 3pce bathroom and WORKOUT ROOM. There is a HEATED, FULLY FINISHED TRIPLE GARAGE, large back deck w/outdoor GAS FIREPLACE and a huge fully fenced yard! New Hot Water Tank 2024. This home shows absolutely beautifully!

Built in 2010



Essential Information

MLS® #	E4421204
Price	\$1,425,000
Bedrooms	6
Bathrooms	3.50
Full Baths	3
Half Baths	1
Square Footage	2,628
Acres	0.50
Year Built	2010
Type	Rural
Sub-Type	Detached Single Family
Style	Bungalow
Status	Active

Community Information

Address	111 Pinnacle Terrace
Area	Rural Sturgeon County
Subdivision	Pinnacle Ridge Estates
City	Rural Sturgeon County
County	ALBERTA
Province	AB
Postal Code	T8T 0B5

Amenities

Features	Air Conditioner, Deck, See Remarks, Natural Gas BBQ Hookup
----------	--

Interior

Interior Features	ensuite bathroom
Heating	Forced Air-1, Natural Gas
Stories	3
Has Basement	Yes
Basement	Full, Finished

Exterior

Exterior	Wood
Exterior Features	Fenced, Golf Nearby, Landscaped, Shopping Nearby, See Remarks
Construction	Wood
Foundation	Concrete Perimeter

Additional Information

Date Listed	February 11th, 2025
Days on Market	79
Zoning	Zone 60
HOA Fees	750
HOA Fees Freq.	Annually

DATA IS DEEMED RELIABLE BUT IS NOT GUARANTEED ACCURATE BY THE REALTORS® ASSOCIATION OF EDMONTON. COPYRIGHT 2025 BY THE REALTORS® ASSOCIATION OF EDMONTON. ALL RIGHTS RESERVED.Trademarks are owned or controlled by the Canadian Real Estate Association (CREA) and identify real estate professionals who are members of CREA (REALTOR®, REALTORS®) and/or the quality of services they provide (MLS®, Multiple Listing Service®)

Listing information last updated on April 30th, 2025 at 10:47pm MDT