

\$375,000 - 213 7609 Sparrow Drive, Leduc

MLS® #E4421288

\$375,000

0 Bedroom, 0.00 Bathroom,
Industrial on 0.00 Acres

None, Leduc, AB

Warehouse bay, available for possession with 30 days notice. Open warehouse with large overhead door. Buildout includes a washroom and kitchenette. Shop has ceiling fans, fully sprinklered, ample parking, sump and high ceilings.

Built in 2019

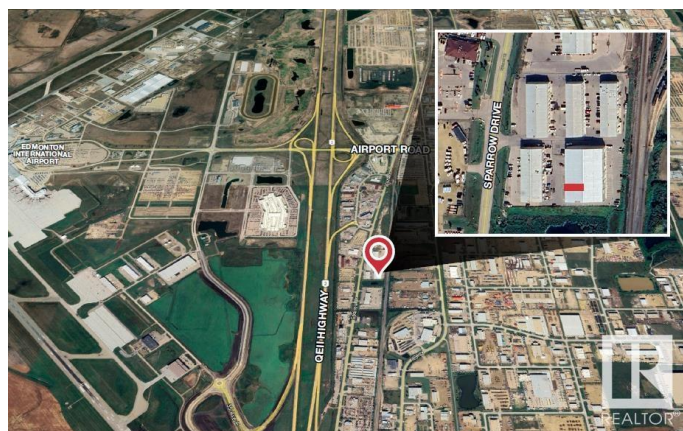
Essential Information

MLS® #	E4421288
Price	\$375,000
Bathrooms	0.00
Acres	0.00
Year Built	2019
Type	Industrial
Status	Active

Community Information

Address	213 7609 Sparrow Drive
Area	Leduc
Subdivision	None
City	Leduc
County	ALBERTA
Province	AB
Postal Code	T9E 0H3

Exterior



Exterior	Mixed
Construction	Mixed

Additional Information

Date Listed	February 12th, 2025
Days on Market	124
Zoning	Zone 81

DATA IS DEEMED RELIABLE BUT IS NOT GUARANTEED ACCURATE BY THE REALTORS® ASSOCIATION OF EDMONTON. COPYRIGHT 2025 BY THE REALTORS® ASSOCIATION OF EDMONTON. ALL RIGHTS RESERVED.Trademarks are owned or controlled by the Canadian Real Estate Association (CREA) and identify real estate professionals who are members of CREA (REALTOR®, REALTORS®) and/or the quality of services they provide (MLS®, Multiple Listing Service®)

Listing information last updated on June 16th, 2025 at 5:32pm MDT