

\$699,900 - 32 23329 Sh 651, Rural Sturgeon County

MLS® #E4421749

\$699,900

5 Bedroom, 3.00 Bathroom, 1,597 sqft

Rural on 1.56 Acres

Lily Lake Estates_MSTU, Rural Sturgeon County, AB

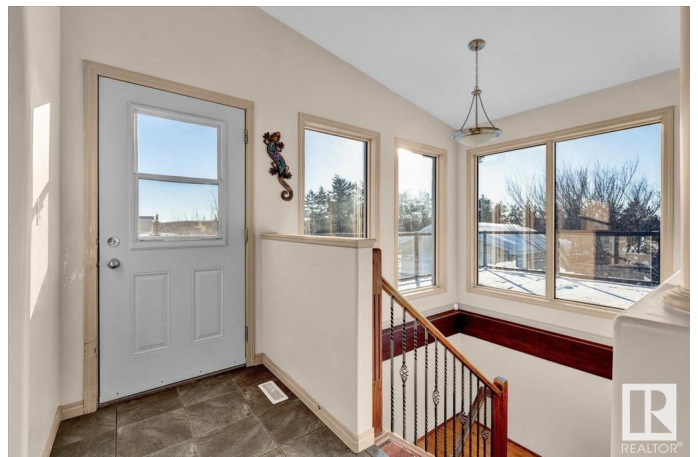
Welcome to Lily Lake Estates in Sturgeon County - one of the rare areas where your home overlooks Lily Lake and the lot has loads of trees and a gentle slope. Built in 2008 the 1597 sq ft WALK OUT BUNGALOW has so many great qualities, starting with a wrap-around deck for seasonal views . Inside the home are vaulted ceilings & loads of windows for natural light. Main floor laundry in the 2 pc bathroom at the side entrance, open concept kitchen, dining area & living room. The primary bedroom on this level has a 5 pc ensuite, walk-in closet & 2nd closet. 2 other bedrooms & a 4 pc bathroom. The basement w/ 9 ft ceilings is well on its way to completion - drywalled, painted, most of the ceiling done, a partly completed wet bar, plus 2 more bedrooms & bathroom (walk-in shower needs finishing). Garden doors lead to the lower patio. Central A/C, Central Vac, & ICF foundation. Detached double garage is insulated & heated & gated front entrance on this 1.56 acre lot. Relax at the firepit with lake views!

Built in 2008

Essential Information

MLS® # E4421749

Price \$699,900



Bedrooms	5
Bathrooms	3.00
Full Baths	2
Half Baths	2
Square Footage	1,597
Acres	1.56
Year Built	2008
Type	Rural
Sub-Type	Detached Single Family
Style	Raised Bungalow
Status	Active

Community Information

Address	32 23329 Sh 651
Area	Rural Sturgeon County
Subdivision	Lily Lake Estates_MSTU
City	Rural Sturgeon County
County	ALBERTA
Province	AB
Postal Code	T0A 1N6

Amenities

Features	Air Conditioner, Closet Organizers, Deck, Detectors Smoke, Fire Pit, Hot Water Natural Gas, No Smoking Home, Vaulted Ceiling, Vinyl Windows, Walkout Basement, 9 ft. Basement Ceiling
----------	---

Interior

Interior Features	ensuite bathroom
Heating	Forced Air-1, Natural Gas
Fireplace	Yes
Stories	2
Has Basement	Yes
Basement	Full, Partially Finished

Exterior

Exterior	Modular
Exterior Features	Golf Nearby, Landscaped, Sloping Lot, Treed Lot
Construction	Modular
Foundation	Insulated Concrete Form

Additional Information

Date Listed February 15th, 2025
Days on Market 122
Zoning Zone 60

DATA IS DEEMED RELIABLE BUT IS NOT GUARANTEED ACCURATE BY THE REALTORS® ASSOCIATION OF EDMONTON. COPYRIGHT 2025 BY THE REALTORS® ASSOCIATION OF EDMONTON. ALL RIGHTS RESERVED.Trademarks are owned or controlled by the Canadian Real Estate Association (CREA) and identify real estate professionals who are members of CREA (REALTOR®, REALTORS®) and/or the quality of services they provide (MLS®, Multiple Listing Service®)
Listing information last updated on June 17th, 2025 at 4:47am MDT