

\$0 - 101 16220 Stony Plain Road, Edmonton

MLS® #E4422064

\$0

0 Bedroom, 0.00 Bathroom,
Retail on 0.00 Acres

Britannia Youngstown, Edmonton, AB

approximately 1300sf main floor and 1800sf on the 2nd floor SPACE AVAILABLE IN THIS BUILDING. MAIN FLOOR & UPPER FLOOR PERFECT FOR SPAS , BAY ON THE MAIN FLOOR SUITABLE FOR RESTAURANTS, CAFES, FRANCHISE AND MANY OTHER OPTIONS. IT IS SURROUNDED BY A LOT OF RESIDENCE AREA AND CLOSE TO MAYFIELD AND WEST EDMONTON MALL.

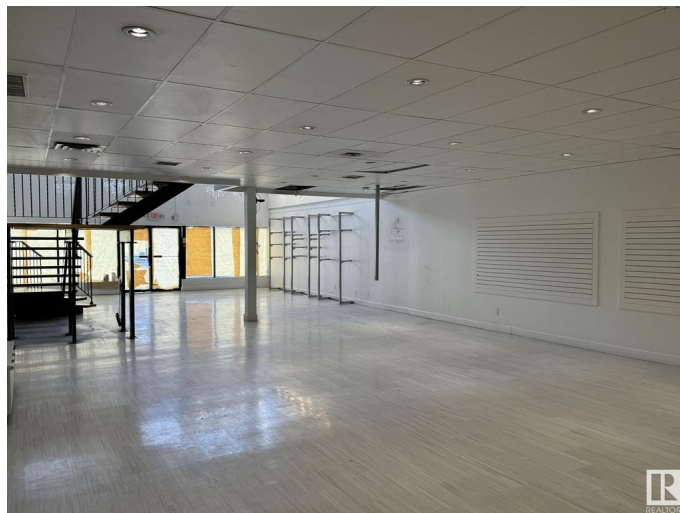
Built in 1986

Essential Information

| | |
|------------|----------|
| MLS® # | E4422064 |
| Bathrooms | 0.00 |
| Acres | 0.00 |
| Year Built | 1986 |
| Type | Retail |
| Status | Active |

Community Information

| | |
|-------------|----------------------------|
| Address | 101 16220 Stony Plain Road |
| Area | Edmonton |
| Subdivision | Britannia Youngstown |
| City | Edmonton |
| County | ALBERTA |
| Province | AB |
| Postal Code | T5P 4A4 |



Exterior

| | |
|--------------|-------------|
| Exterior | See Remarks |
| Construction | See Remarks |

Additional Information

| | |
|----------------|---------------------|
| Date Listed | February 19th, 2025 |
| Days on Market | 117 |
| Zoning | Zone 21 |

DATA IS DEEMED RELIABLE BUT IS NOT GUARANTEED ACCURATE BY THE REALTORS® ASSOCIATION OF EDMONTON. COPYRIGHT 2025 BY THE REALTORS® ASSOCIATION OF EDMONTON. ALL RIGHTS RESERVED.Trademarks are owned or controlled by the Canadian Real Estate Association (CREA) and identify real estate professionals who are members of CREA (REALTOR®, REALTORS®) and/or the quality of services they provide (MLS®, Multiple Listing Service®)

Listing information last updated on June 16th, 2025 at 9:02pm MDT