

# \$125,000 - 4622 55 Avenue, Wetaskiwin

MLS® #E4423161

**\$125,000**

0 Bedroom, 0.00 Bathroom,  
Land Commercial on 0.00 Acres

Recside, Wetaskiwin, AB

130' x 60' vacant lot in Wetaskiwin! Can build a single family home OR up to a 4plex with 4 legal basement suites. Preliminary plans for a 6plex available. Comes with topographic survey.



## Essential Information

MLS® #	E4423161
Price	\$125,000
Bathrooms	0.00
Acres	0.00
Type	Land Commercial
Status	Active

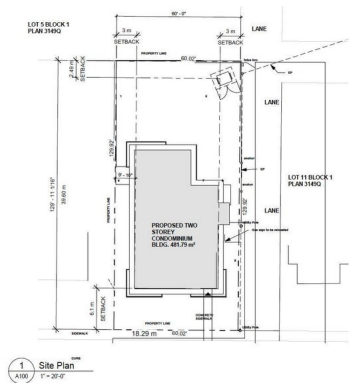


## Community Information

Address	4622 55 Avenue
Area	Wetaskiwin
Subdivision	Recside
City	Wetaskiwin
County	ALBERTA
Province	AB
Postal Code	T9A 1A2

## Additional Information

Date Listed	February 27th, 2025
Days on Market	184
Zoning	Zone 80



Area Schedule (Gross Building)				
Unit	Name	Level	Area	Area m <sup>2</sup>
101	TWO BEDROOM UNIT	MAIN FLOOR	961 SF	89.30 m <sup>2</sup>
102	ONE BEDROOM UNIT	MAIN FLOOR	650 SF	60.37 m <sup>2</sup>
103	ONE BEDROOM UNIT	MAIN FLOOR	650 SF	60.37 m <sup>2</sup>
201	TWO BEDROOM UNIT	2ND FLOOR	1,200 SF	111.48 m <sup>2</sup>
202	ONE BEDROOM UNIT	2ND FLOOR	650 SF	60.37 m <sup>2</sup>
203	ONE BEDROOM UNIT	2ND FLOOR	650 SF	60.37 m <sup>2</sup>
			4,561 SF	422.59 m <sup>2</sup>

CONCEPT DRAWING - (N) (T)  
FOR CONSTRUCTION (N)

DATA IS DEEMED RELIABLE BUT IS NOT GUARANTEED ACCURATE BY THE REALTORS® ASSOCIATION OF EDMONTON. COPYRIGHT 2025 BY THE REALTORS® ASSOCIATION OF EDMONTON. ALL RIGHTS RESERVED. Trademarks are owned or controlled by the Canadian Real Estate Association (CREA) and identify real estate professionals who are members of CREA (REALTOR®, REALTORS®) and/or the quality of services they provide (MLS®, Multiple Listing Service®)

Listing information last updated on August 30th, 2025 at 11:47am MDT