

\$660,000 - 34520 210 Range Road, Rural Stettler County

MLS® #E4423996

\$660,000

0 Bedroom, 0.00 Bathroom,
Land Commercial on 0.00 Acres

Scollard, Rural Stettler County, AB

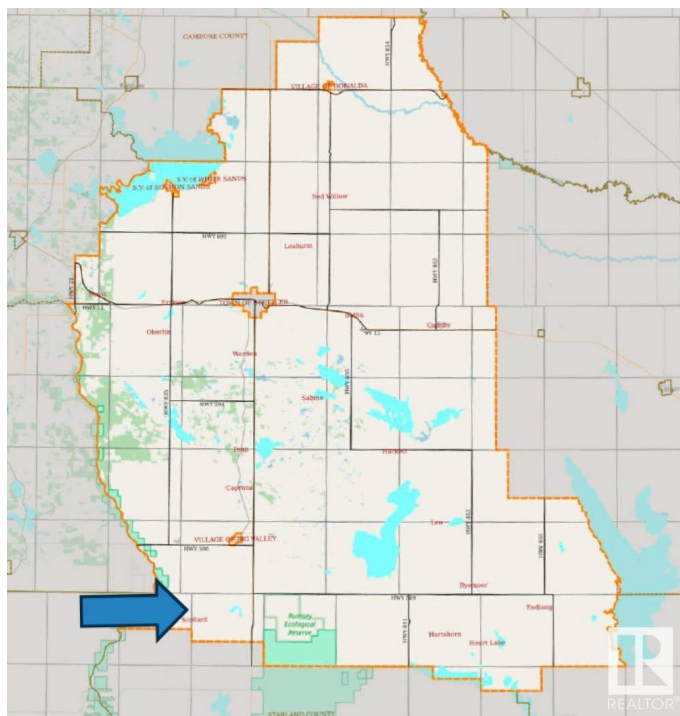
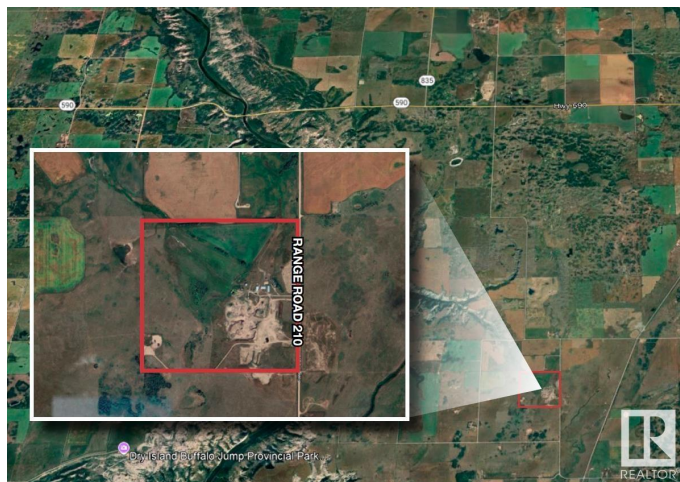
Corner Parcel: 159 acres $\hat{=}$ with exposure to Range Road 210. Zoning: AG. Currently utilized as pasture. Parcel: Includes gravel deposit areas. Location: Located within rural Stettler County along Range Road 210, between Township Roads 344A and 350, south of the Town of Stettler. Outbuildings: Shop: 2,400 sq.ft. $\hat{=}$ (40 $\hat{=}$ ™x60 $\hat{=}$ ™); Barn: 1,020 sq.ft. $\hat{=}$ (30 $\hat{=}$ ™x34 $\hat{=}$ ™); Quonset: 4,080 sq.ft. $\hat{=}$ (40 $\hat{=}$ ™x102 $\hat{=}$ ™).

Essential Information

MLS® #	E4423996
Price	\$660,000
Bathrooms	0.00
Acres	0.00
Type	Land Commercial
Status	Active

Community Information

Address	34520 210 Range Road
Area	Rural Stettler County
Subdivision	Scollard
City	Rural Stettler County
County	ALBERTA
Province	AB
Postal Code	T0J 0G0



Exterior

Exterior	Mixed
Construction	Mixed

Additional Information

Date Listed	March 5th, 2025
Days on Market	56
Zoning	Zone RUR6

DATA IS DEEMED RELIABLE BUT IS NOT GUARANTEED ACCURATE BY THE REALTORS® ASSOCIATION OF EDMONTON. COPYRIGHT 2025 BY THE REALTORS® ASSOCIATION OF EDMONTON. ALL RIGHTS RESERVED.Trademarks are owned or controlled by the Canadian Real Estate Association (CREA) and identify real estate professionals who are members of CREA (REALTOR®, REALTORS®) and/or the quality of services they provide (MLS®, Multiple Listing Service®)

Listing information last updated on April 30th, 2025 at 4:32pm MDT