

\$550,000 - 7283 Morgan Road, Edmonton

MLS® #E4424337

\$550,000

4 Bedroom, 3.50 Bathroom, 1,553 sqft

Single Family on 0.00 Acres

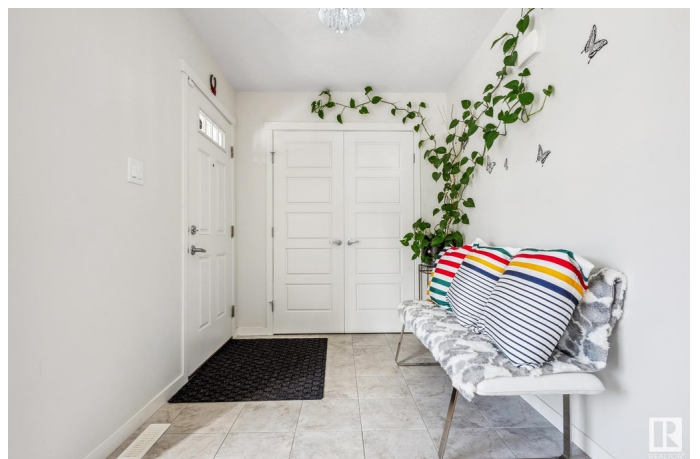
Griesbach, Edmonton, AB

Welcome to this stunning 2-storey home in the heart of Griesbach! Built in 2017, it offers over 2,000 square feet of stylish, functional living space. The main floor features an open-concept layout with a large island, granite countertops, stainless steel appliances, and 36" upper cabinets—perfect for everyday living and entertaining. The kitchen flows into the bright living and dining areas, giving the space a warm and inviting vibe. Upstairs, you'll find a spacious primary suite with a walk-in closet and ensuite, plus two more bedrooms and a full bathroom. The newly finished basement adds even more flexibility with a large bedroom, rec room, or home office. Stay cool in the summer with central A/C, and enjoy the custom deck, patio, and pet-friendly gravel area out back. The oversized 22'x24' garage easily fits larger vehicles. All of this in one of Edmonton's most sought-after communities—just minutes from parks, trails, and great local amenities!

Built in 2017

Essential Information

MLS® #	E4424337
Price	\$550,000
Bedrooms	4



Bathrooms	3.50
Full Baths	3
Half Baths	1
Square Footage	1,553
Acres	0.00
Year Built	2017
Type	Single Family
Sub-Type	Detached Single Family
Style	2 Storey
Status	Active

Community Information

Address	7283 Morgan Road
Area	Edmonton
Subdivision	Griesbach
City	Edmonton
County	ALBERTA
Province	AB
Postal Code	T5E 6V7

Amenities

Amenities	Air Conditioner, Deck, Patio
Parking	Double Garage Detached, Over Sized

Interior

Interior Features	ensuite bathroom
Appliances	Air Conditioning-Central, Dishwasher-Built-In, Dryer, Garage Control, Garage Opener, Microwave Hood Fan, Refrigerator, Stove-Electric, See Remarks
Heating	Forced Air-1, Natural Gas
Stories	3
Has Basement	Yes
Basement	Full, Finished

Exterior

Exterior	Wood, Vinyl
Exterior Features	Back Lane, Landscaped, Low Maintenance Landscape, Paved Lane, Playground Nearby, Public Transportation, Schools, Shopping Nearby
Roof	Asphalt Shingles

Construction	Wood, Vinyl
Foundation	Concrete Perimeter

Additional Information

Date Listed	March 6th, 2025
Days on Market	67
Zoning	Zone 27

DATA IS DEEMED RELIABLE BUT IS NOT GUARANTEED ACCURATE BY THE REALTORS® ASSOCIATION OF EDMONTON. COPYRIGHT 2025 BY THE REALTORS® ASSOCIATION OF EDMONTON. ALL RIGHTS RESERVED.Trademarks are owned or controlled by the Canadian Real Estate Association (CREA) and identify real estate professionals who are members of CREA (REALTOR®, REALTORS®) and/or the quality of services they provide (MLS®, Multiple Listing Service®)

Listing information last updated on May 12th, 2025 at 4:17am MDT