

\$225,000 - 22 53302 Rge Rd 12, Rural Parkland County

MLS® #E4426960

\$225,000

0 Bedroom, 0.00 Bathroom,
Rural on 3.21 Acres

Partridge Place, Rural Parkland County, AB

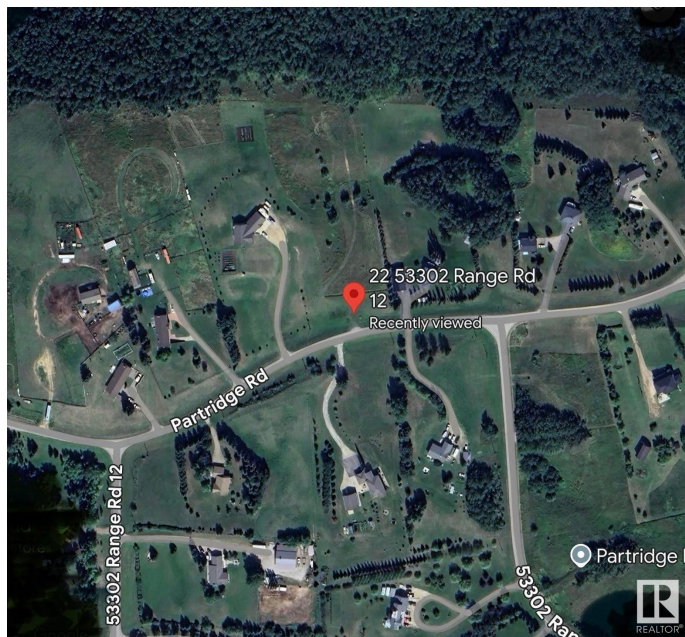
3.21 acres! Only 12 minutes North-West of Stony Plain. This beautiful lot is perfectly positioned, backing onto a forested reserve, with no neighbors behind. This is the perfect walkout piece of paradise to build your vision. Sit back, enjoy the sunset & views of nature in this prestigious and peaceful setting. Quick access to the Yellowhead. Grow your own nutrition, breathe in the fresh country air, this is what living the dream looks like!

Essential Information

MLS® #	E4426960
Price	\$225,000
Bathrooms	0.00
Acres	3.21
Type	Rural
Sub-Type	Vacant Lot/Land
Status	Active

Community Information

Address	22 53302 Rge Rd 12
Area	Rural Parkland County
Subdivision	Partridge Place
City	Rural Parkland County
County	ALBERTA
Province	AB
Postal Code	T7Y 0B9



Exterior

Exterior Features Private Setting

Additional Information

Date Listed March 21st, 2025

Days on Market 44

Zoning Zone 70

DATA IS DEEMED RELIABLE BUT IS NOT GUARANTEED ACCURATE BY THE REALTORS® ASSOCIATION OF EDMONTON. COPYRIGHT 2025 BY THE REALTORS® ASSOCIATION OF EDMONTON. ALL RIGHTS RESERVED.Trademarks are owned or controlled by the Canadian Real Estate Association (CREA) and identify real estate professionals who are members of CREA (REALTOR®, REALTORS®) and/or the quality of services they provide (MLS®, Multiple Listing Service®)

Listing information last updated on May 4th, 2025 at 6:17pm MDT