

\$0 - 5 Alberta Avenue, Spruce Grove

MLS® #E4430262

\$0

0 Bedroom, 0.00 Bathroom,
Industrial on 0.00 Acres

Diamond Industrial Park, Spruce Grove, AB

1960 Sq Ft Industrial Bay for lease. Bay is approx 46 Feet long, with additional office space in front and an additional 750 sq ft mezzanine above. 12' overhead door. One washroom and lots of light in office area. Ample parking and shared yard space. Zoned M1 General Industrial. Uses ranging from Automotive Services to Office Services and Retail. Available Immediately.

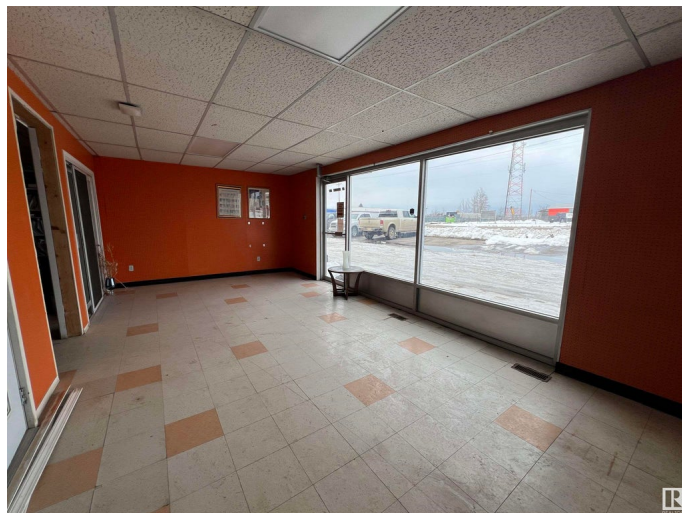
Built in 1980

Essential Information

MLS® #	E4430262
Bathrooms	0.00
Acres	0.00
Year Built	1980
Type	Industrial
Status	Active

Community Information

Address	5 Alberta Avenue
Area	Spruce Grove
Subdivision	Diamond Industrial Park
City	Spruce Grove
County	ALBERTA
Province	AB
Postal Code	T7X 3A6



Exterior

Exterior	Block
Construction	Block

Additional Information

Date Listed	April 8th, 2025
Days on Market	69
Zoning	Zone 91

DATA IS DEEMED RELIABLE BUT IS NOT GUARANTEED ACCURATE BY THE REALTORS® ASSOCIATION OF EDMONTON. COPYRIGHT 2025 BY THE REALTORS® ASSOCIATION OF EDMONTON. ALL RIGHTS RESERVED.Trademarks are owned or controlled by the Canadian Real Estate Association (CREA) and identify real estate professionals who are members of CREA (REALTOR®, REALTORS®) and/or the quality of services they provide (MLS®, Multiple Listing Service®)

Listing information last updated on June 16th, 2025 at 10:02am MDT