

\$110,000 - 913 10024 Jasper Avenue, Edmonton

MLS® #E4430425

\$110,000

1 Bedroom, 1.00 Bathroom, 450 sqft

Condo / Townhouse on 0.00 Acres

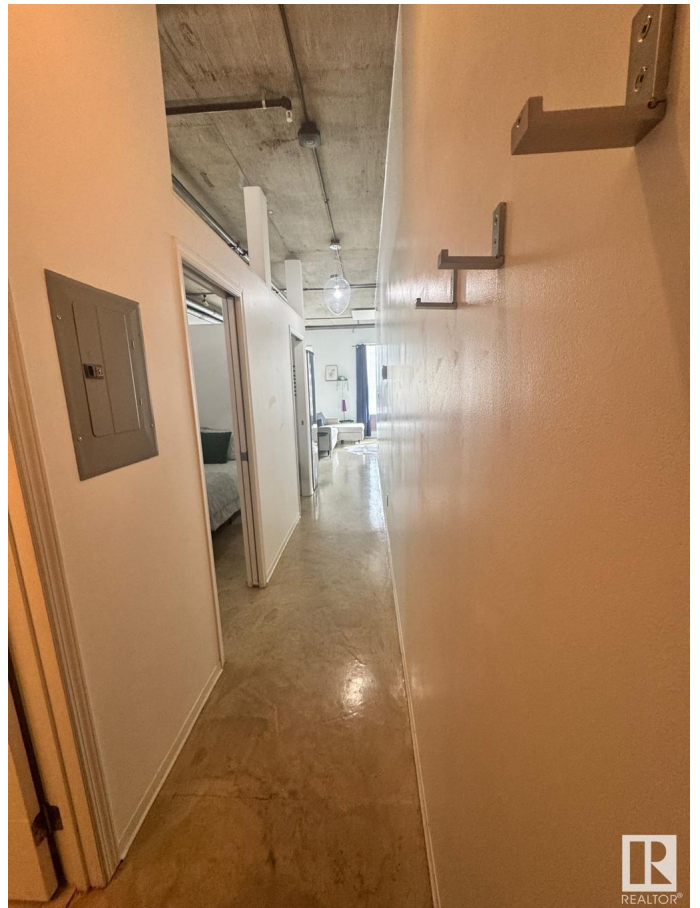
Downtown (Edmonton), Edmonton, AB

Live in the heart of downtown at Cambridge Lofts—Fully Furnished!! Turnkey Air B and B!! where style, value & convenience meet! This upgraded 1 bed/1 bath unit with rare 10'™ ceilings, concrete floors & a sleek modern-industrial vibe. South-facing windows fill the space with light, enhancing the open, airy feel. The kitchen features high-gloss Italian-style cabinetry, granite counters, SS Electrolux appliances & SS backsplash. The bathroom has been updated, plus \$22K in upgrades, including infrared heating, designer finishes & in-suite laundry. This secure, pet-friendly building is the only one with private LRT access from the basement! Walk to City Centre Mall, restaurants, MacEwan, U of A & more. Perfect for professionals or students seeking low-maintenance urban living. Short term rental friendly building! Quick possession is available! Ready to go, Furnishings, Dishes, Linens all very new and included! Air B&B ready or Just move in!

Built in 1968

Essential Information

MLS® #	E4430425
Price	\$110,000
Bedrooms	1
Bathrooms	1.00



Full Baths	1
Square Footage	450
Acres	0.00
Year Built	1968
Type	Condo / Townhouse
Sub-Type	Apartment High Rise
Style	Single Level Apartment
Status	Active

Community Information

Address	913 10024 Jasper Avenue
Area	Edmonton
Subdivision	Downtown (Edmonton)
City	Edmonton
County	ALBERTA
Province	AB
Postal Code	T5J 1R9

Amenities

Amenities	On Street Parking, Ceiling 10 ft., Detectors Smoke, Security Door, Security Personnel, Sprinkler System-Fire
Parking	No Parking

Interior

Appliances	Dishwasher-Built-In, Dryer, Furniture Included, Microwave Hood Fan, Refrigerator, Stove-Electric, Washer, Window Coverings
Heating	Baseboard, Electric
# of Stories	18
Stories	1
Has Basement	Yes
Basement	None, No Basement

Exterior

Exterior	Concrete, Stucco
Exterior Features	Back Lane, Park/Reserve, Public Transportation, Schools, Shopping Nearby, View City, View Downtown
Roof	Tar & Gravel
Construction	Concrete, Stucco
Foundation	Concrete Perimeter

Additional Information

Date Listed	April 10th, 2025
Days on Market	20
Zoning	Zone 12
Condo Fee	\$511



DATA IS DEEMED RELIABLE BUT IS NOT GUARANTEED ACCURATE BY THE REALTORS® ASSOCIATION OF EDMONTON. COPYRIGHT 2025 BY THE REALTORS® ASSOCIATION OF EDMONTON. ALL RIGHTS RESERVED. Trademarks are owned or controlled by the Canadian Real Estate Association (CREA) and identify real estate professionals who are members of CREA (REALTOR®, REALTORS®) and/or the quality of services they provide (MLS®, Multiple Listing Service®)

Listing information last updated on April 30th, 2025 at 5:47pm MDT