

## \$169,900 - 45 53026 Hghway 31, Rural Parkland County

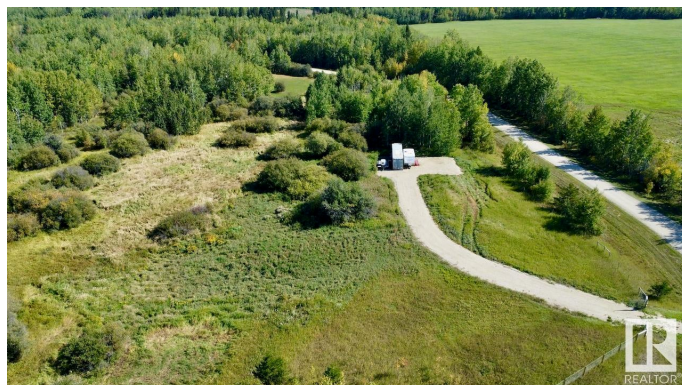
MLS® #E4431138

**\$169,900**

0 Bedroom, 0.00 Bathroom,  
Rural on 4.23 Acres

Singing Hills Estates, Rural Parkland County,  
AB

Welcome to your perfect getaway in Singing Hills, just an hour west of Edmonton! This stunning lot is ready to be your private retreat or the foundation for your dream development. The property features a meticulously constructed 200' long by 16' wide driveway that leads to a spacious 40' by 60' parking pad, providing ample space for vehicles, RVs, or future structures. The driveway and parking pad are built to last, with a roadway geo-textile membrane installed atop a compacted clay surface, covered by 10 inches of compacted 40mm aggregates. This solid foundation ensures durability and stability for years to come. The entire perimeter of the lot is securely fenced with a 4-foot fence, complete with a gate, offering privacy and peace of mind. Whether you're looking to develop or simply enjoy a serene spot close to Lake Wabamun, this property is a rare opportunity!



### Essential Information

|           |                 |
|-----------|-----------------|
| MLS® #    | E4431138        |
| Price     | \$169,900       |
| Bathrooms | 0.00            |
| Acres     | 4.23            |
| Type      | Rural           |
| Sub-Type  | Vacant Lot/Land |

Status                      Active

**Community Information**

Address                    45 53026 Highway 31  
Area                        Rural Parkland County  
Subdivision               Singing Hills Estates  
City                        Rural Parkland County  
County                     ALBERTA  
Province                  AB  
Postal Code               T0E 2B0

**Exterior**

Exterior Features    Corner Lot, Fenced, Golf Nearby, No Back Lane, Recreation Use

**Additional Information**

Date Listed                April 16th, 2025  
Days on Market        63  
Zoning                      Zone 93

DATA IS DEEMED RELIABLE BUT IS NOT GUARANTEED ACCURATE BY THE REALTORS® ASSOCIATION OF EDMONTON. COPYRIGHT 2025 BY THE REALTORS® ASSOCIATION OF EDMONTON. ALL RIGHTS RESERVED.Trademarks are owned or controlled by the Canadian Real Estate Association (CREA) and identify real estate professionals who are members of CREA (REALTOR®, REALTORS®) and/or the quality of services they provide (MLS®, Multiple Listing Service®)  
Listing information last updated on June 18th, 2025 at 10:48am MDT