

# \$699,900 - 22 Elise Place, St. Albert

MLS® #E4431225

**\$699,900**

3 Bedroom, 3.00 Bathroom, 1,393 sqft  
Single Family on 0.00 Acres

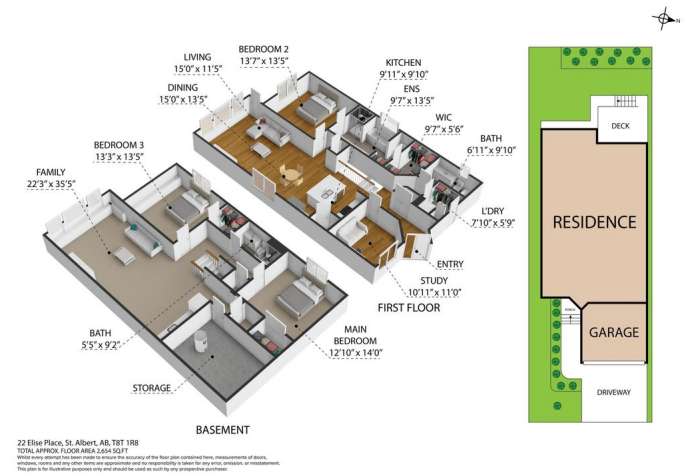
Erin Ridge North, St. Albert, AB

This beautifully maintained bungalow offers 1400 sq ft of spotless, move-in ready living. Lovingly cared for by the original owners, this home combines quality, comfort, and location. The main floor features a spacious and sun-filled layout with stunning views throughout the open-concept living and dining areas. The large primary bedroom includes a walk-in closet and a full ensuite. A bright den on the main level provides the perfect space for a home office, guest room, or reading nook. Youâ€™ll also find a second bathroom and main floor laundry for added convenience. The kitchen is clean and functional, offering ample cabinetry and a seamless flow into the main living space. The fully finished basement includes a large recreation room, two additional generously sized bedrooms, bathroom, and plenty of storage. Located near schools, shopping, and parks, this immaculate bungalow offers peaceful living in a quiet and convenient neighborhood. A must-see!

Built in 2014

## Essential Information

MLS® #	E4431225
Price	\$699,900
Bedrooms	3



Bathrooms	3.00
Full Baths	3
Square Footage	1,393
Acres	0.00
Year Built	2014
Type	Single Family
Sub-Type	Detached Single Family
Style	Bungalow
Status	Active

### Community Information

Address	22 Elise Place
Area	St. Albert
Subdivision	Erin Ridge North
City	St. Albert
County	ALBERTA
Province	AB
Postal Code	T8N 7P5

### Amenities

Amenities	Ceiling 9 ft., Closet Organizers, Deck, Exterior Walls- 2"x6", Front Porch, No Animal Home, No Smoking Home, Vaulted Ceiling, Natural Gas BBQ Hookup, 9 ft. Basement Ceiling
Parking	Double Garage Attached, Heated, Insulated
Is Waterfront	Yes

### Interior

Interior Features	ensuite bathroom
Appliances	Air Conditioning-Central, Dishwasher-Built-In, Dryer, Freezer, Garage Control, Garage Opener, Garburator, Humidifier-Power(Furnace), Microwave Hood Fan, Stove-Electric, Vacuum System Attachments, Vacuum Systems, Washer, Window Coverings, Refrigerators-Two
Heating	Forced Air-1, Natural Gas
Stories	2
Has Basement	Yes
Basement	Full, Finished

### Exterior

Exterior	Wood, Asphalt, Stone, Vinyl
Exterior Features	Backs Onto Lake, Backs Onto Park/Trees, Flat Site, Golf Nearby,

	Landscaped, Playground Nearby, Public Transportation, Schools
Roof	Asphalt Shingles
Construction	Wood, Asphalt, Stone, Vinyl
Foundation	Concrete Perimeter

### **Additional Information**

Date Listed	April 16th, 2025
Days on Market	15
Zoning	Zone 24

DATA IS DEEMED RELIABLE BUT IS NOT GUARANTEED ACCURATE BY THE REALTORS® ASSOCIATION OF EDMONTON. COPYRIGHT 2025 BY THE REALTORS® ASSOCIATION OF EDMONTON. ALL RIGHTS RESERVED. Trademarks are owned or controlled by the Canadian Real Estate Association (CREA) and identify real estate professionals who are members of CREA (REALTOR®, REALTORS®) and/or the quality of services they provide (MLS®, Multiple Listing Service®)

Listing information last updated on May 1st, 2025 at 5:32am MDT