

# **\$1,589,000 - 9 54231 Rge Road 250, Rural Sturgeon County**

MLS® #E4432084

**\$1,589,000**

5 Bedroom, 3.50 Bathroom, 2,560 sqft

Rural on 1.54 Acres

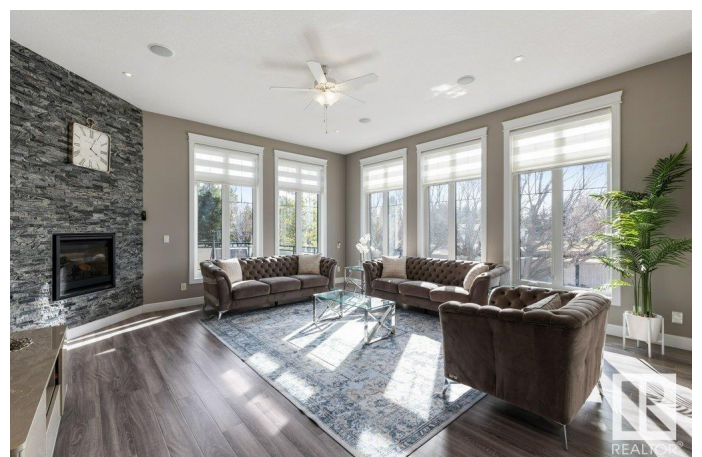
Skyglen Airpark, Rural Sturgeon County, AB

Gorgeous custom-built home offering approx. 3,600 sq ft of finished living space on a private 1.54-acre lot in Sturgeon County—just minutes from St. Albert & Edmonton. Includes a 3,200 sq ft DREAM SHOP with in-floor heat, upper-level offices, & a kitchenette area. Step inside to soaring ceilings & a spacious living room with a stone fireplace, perfect for entertaining. The family room features tile flooring, a wood burning fireplace, & a private balcony. A gourmet kitchen showcases granite counters, stainless steel appliances, tile floors, ample cabinetry, & a large dining area with pantry. Upstairs are 4 generous bedrooms and a full bath. The huge primary suite includes a walk-in closet, 5-piece ensuite, and private balcony. The fully finished basement boasts in-floor heating, large windows, a media room, office space, full bath, bedroom, and storage. Triple attached tandem garage with heated floors completes this dream property. Enjoy country living near urban amenities!

Built in 2015

## **Essential Information**

MLS® #	E4432084
Price	\$1,589,000
Bedrooms	5



Bathrooms	3.50
Full Baths	3
Half Baths	1
Square Footage	2,560
Acres	1.54
Year Built	2015
Type	Rural
Sub-Type	Detached Single Family
Style	Bi-Level
Status	Active

### **Community Information**

Address	9 54231 Rge Road 250
Area	Rural Sturgeon County
Subdivision	Skyglen Airpark
City	Rural Sturgeon County
County	ALBERTA
Province	AB
Postal Code	T8T 0C2

### **Amenities**

Features	Gazebo, Patio, Workshop, See Remarks
----------	--------------------------------------

### **Interior**

Interior Features	ensuite bathroom
Heating	Forced Air-1, In Floor Heat System, Natural Gas
Stories	2
Has Basement	Yes
Basement	Full, Finished

### **Exterior**

Exterior	Wood
Exterior Features	Flat Site, Landscaped, Level Land, See Remarks
Construction	Wood
Foundation	Concrete Perimeter

### **Additional Information**

Date Listed	April 22nd, 2025
Days on Market	57

## Zoning

## Zone 60

DATA IS DEEMED RELIABLE BUT IS NOT GUARANTEED ACCURATE BY THE REALTORS® ASSOCIATION OF EDMONTON. COPYRIGHT 2025 BY THE REALTORS® ASSOCIATION OF EDMONTON. ALL RIGHTS RESERVED. Trademarks are owned or controlled by the Canadian Real Estate Association (CREA) and identify real estate professionals who are members of CREA (REALTOR®, REALTORS®) and/or the quality of services they provide (MLS®, Multiple Listing Service®)

Listing information last updated on June 18th, 2025 at 3:47pm MDT