

## \$415,000 - 10429 85 Avenue, Edmonton

MLS® #E4432671

**\$415,000**

1 Bedroom, 1.00 Bathroom, 738 sqft

Single Family on 0.00 Acres

Strathcona, Edmonton, AB

Welcome to 10429 85 Ave NW – a beautifully restored century home just steps from Whyte Avenue and the University of Alberta. Thoughtfully renovated in 2017 and recognized as Alcam’s “Home of the Year,” this property blends timeless character with modern comforts. Inside, you’ll find every detail has been updated – from insulation and electrical, to new subflooring, windows, doors, and high-end finishes throughout. The living room features a cozy fireplace that invites relaxation, and the spacious primary bedroom includes a stylish, modern ensuite with the original clawfoot tub. Additional upgrades include hot water tank and furnace (2020) and shingles on the north side (2020). Outside, enjoy a private backyard oasis complete with a detached garage and a covered carport – perfect for all seasons. Whether you're strolling to local cafes, enjoying the river valley trails, or exploring the vibrant Strathcona community, this location truly has it all.

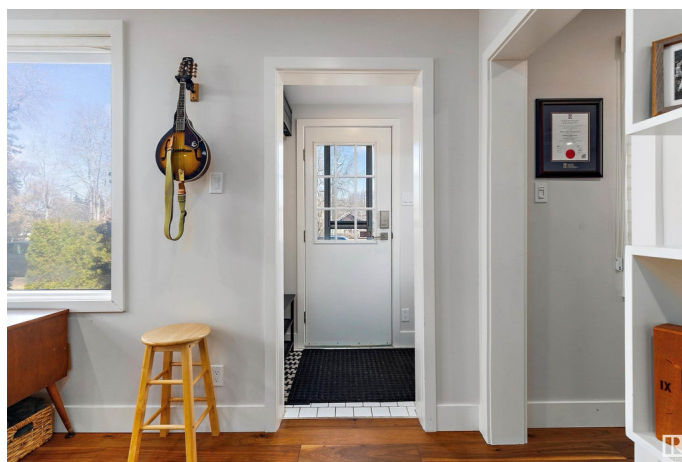
Built in 1914

### Essential Information

MLS® # E4432671

Price \$415,000

Bedrooms 1



Bathrooms	1.00
Full Baths	1
Square Footage	738
Acres	0.00
Year Built	1914
Type	Single Family
Sub-Type	Detached Single Family
Style	Bungalow
Status	Active

### **Community Information**

Address	10429 85 Avenue
Area	Edmonton
Subdivision	Strathcona
City	Edmonton
County	ALBERTA
Province	AB
Postal Code	T6E 2K2

### **Amenities**

Amenities	Deck, Fire Pit
Parking Spaces	2
Parking	Single Carport, Single Garage Detached

### **Interior**

Appliances	Dishwasher-Built-In, Dryer, Hood Fan, Refrigerator, Stove-Gas, Washer, Window Coverings
Heating	Forced Air-1, Natural Gas
Fireplace	Yes
Fireplaces	Tile Surround
Stories	2
Has Basement	Yes
Basement	Partial, Finished

### **Exterior**

Exterior	Wood, Vinyl
Exterior Features	Back Lane, Fenced, Playground Nearby, Schools, Shopping Nearby
Roof	Asphalt Shingles
Construction	Wood, Vinyl

Foundation                      Concrete Perimeter

**School Information**

Elementary                      Garneau,Our Lady Mt Carmel  
Middle                              Allendale,Louis St Laurent  
High                                 Strathcona, Louis St L

**Additional Information**

Date Listed                      April 24th, 2025  
Days on Market                6  
Zoning                              Zone 15

DATA IS DEEMED RELIABLE BUT IS NOT GUARANTEED ACCURATE BY THE REALTORS® ASSOCIATION OF EDMONTON. COPYRIGHT 2025 BY THE REALTORS® ASSOCIATION OF EDMONTON. ALL RIGHTS RESERVED.Trademarks are owned or controlled by the Canadian Real Estate Association (CREA) and identify real estate professionals who are members of CREA (REALTOR®, REALTORS®) and/or the quality of services they provide (MLS®, Multiple Listing Service®)  
Listing information last updated on April 30th, 2025 at 1:17pm MDT