

\$464,900 - 3240 Keswick Way, Edmonton

MLS® #E4432848

\$464,900

3 Bedroom, 2.50 Bathroom, 1,419 sqft

Single Family on 0.00 Acres

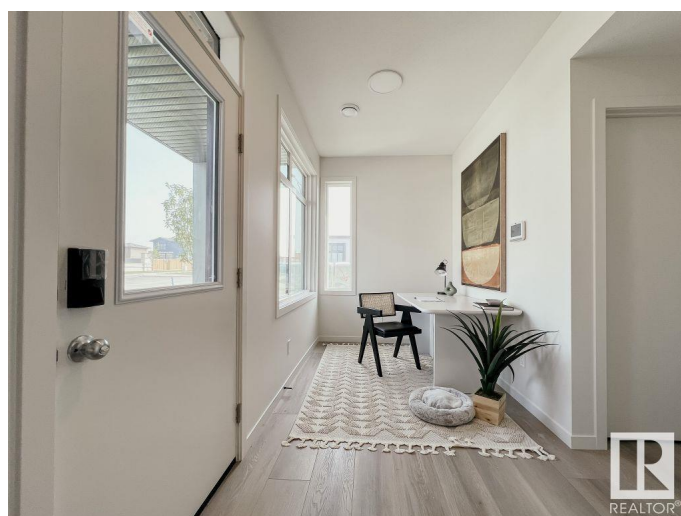
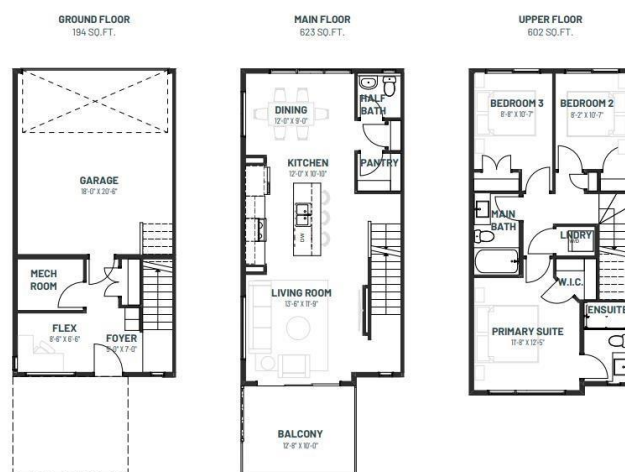
Keswick Area, Edmonton, AB

Perfect for young couples or single parents, the Metro Tailored townhome isn't just a place to live – it's a step toward financial independence and long-term opportunity. Whether you're looking to make a smart investment or help your adult children start their home ownership journey, this modern Westcoast elevation offers the perfect foundation. With 3 levels of above ground living space, oversized windows flood the home with natural light, and an expansive second level balcony with sleek modern railings, every detail is designed for comfort and style. Enjoy the convenience of a double rear attached garage, a cozy fireplace, and fully landscaped, low maintenance living area all with no condo fees. This home is more than space – it's your canvas for creating a future. *photos are for representation only. Colours and finishing may vary*

Built in 2025

Essential Information

| | |
|------------|-----------|
| MLS® # | E4432848 |
| Price | \$464,900 |
| Bedrooms | 3 |
| Bathrooms | 2.50 |
| Full Baths | 2 |
| Half Baths | 1 |



| | |
|----------------|----------------------|
| Square Footage | 1,419 |
| Acres | 0.00 |
| Year Built | 2025 |
| Type | Single Family |
| Sub-Type | Residential Attached |
| Style | 3 Storey |
| Status | Active |

Community Information

| | |
|-------------|------------------|
| Address | 3240 Keswick Way |
| Area | Edmonton |
| Subdivision | Keswick Area |
| City | Edmonton |
| County | ALBERTA |
| Province | AB |
| Postal Code | T6W 5N8 |

Amenities

| | |
|----------------|--|
| Amenities | On Street Parking, Ceiling 9 ft., Detectors Smoke, No Animal Home, No Smoking Home, Smart/Program. Thermostat, Vinyl Windows, HRV System |
| Parking Spaces | 4 |
| Parking | Double Garage Attached |

Interior

| | |
|-------------------|---|
| Interior Features | ensuite bathroom |
| Appliances | Dishwasher-Built-In, Microwave Hood Fan, Refrigerator, Stove-Electric |
| Heating | Forced Air-1, Natural Gas |
| Fireplace | Yes |
| Fireplaces | Tile Surround |
| Stories | 3 |
| Has Basement | Yes |
| Basement | None, No Basement |

Exterior

| | |
|-------------------|---|
| Exterior | Wood, Vinyl |
| Exterior Features | Back Lane, Corner Lot, Flat Site, Landscaped, Playground Nearby, Schools, Shopping Nearby |
| Roof | Asphalt Shingles |

| | |
|--------------|-------------|
| Construction | Wood, Vinyl |
| Foundation | Slab |

Additional Information

| | |
|----------------|------------------|
| Date Listed | April 25th, 2025 |
| Days on Market | 53 |
| Zoning | Zone 56 |
| HOA Fees | 200 |
| HOA Fees Freq. | Annually |

DATA IS DEEMED RELIABLE BUT IS NOT GUARANTEED ACCURATE BY THE REALTORS® ASSOCIATION OF EDMONTON. COPYRIGHT 2025 BY THE REALTORS® ASSOCIATION OF EDMONTON. ALL RIGHTS RESERVED.Trademarks are owned or controlled by the Canadian Real Estate Association (CREA) and identify real estate professionals who are members of CREA (REALTOR®, REALTORS®) and/or the quality of services they provide (MLS®, Multiple Listing Service®)

Listing information last updated on June 17th, 2025 at 2:32am MDT