

\$235,000 - 11229 86 Street, Edmonton

MLS® #E4433153

\$235,000

3 Bedroom, 2.00 Bathroom, 854 sqft

Single Family on 0.00 Acres

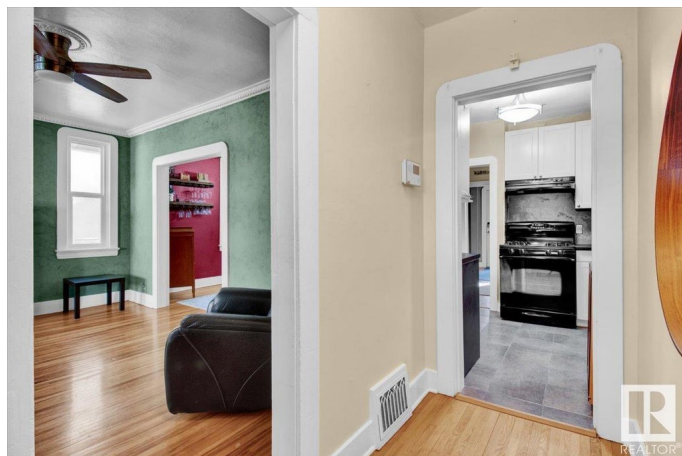
Parkdale (Edmonton), Edmonton, AB

Terrific opportunity for a contractor/renovator but not suitable for most home buyers. This home requires significant foundation repairs but is priced accordingly. Not conducive to a basement suite. Charming character home in a convenient central location close to downtown and LRT. Attractive curb appeal with red clinker brick. Cozy interior with hardwood flooring, crown moldings and fireplace. Huge primary bedroom with walk in closet. Updated main bathroom. Updated efficient kitchen with gas stove. Basement is finished with a second full bathroom, large family room and 2 potential bedrooms. For more details please visit the REALTOR® Website.

Built in 1944

Essential Information

| | |
|----------------|------------------------|
| MLS® # | E4433153 |
| Price | \$235,000 |
| Bedrooms | 3 |
| Bathrooms | 2.00 |
| Full Baths | 2 |
| Square Footage | 854 |
| Acres | 0.00 |
| Year Built | 1944 |
| Type | Single Family |
| Sub-Type | Detached Single Family |



| | |
|--------|----------|
| Style | Bungalow |
| Status | Active |

Community Information

| | |
|-------------|---------------------|
| Address | 11229 86 Street |
| Area | Edmonton |
| Subdivision | Parkdale (Edmonton) |
| City | Edmonton |
| County | ALBERTA |
| Province | AB |
| Postal Code | T5B 3H7 |

Amenities

| | |
|----------------|---|
| Amenities | On Street Parking, Deck, Detectors Smoke, Hot Tub |
| Parking Spaces | 2 |
| Parking | Rear Drive Access |

Interior

| | |
|--------------|---|
| Appliances | Dishwasher-Built-In, Dryer, Refrigerator, Stove-Gas, Washer |
| Heating | Forced Air-1, Natural Gas |
| Stories | 2 |
| Has Basement | Yes |
| Basement | Full, Finished |

Exterior

| | |
|-------------------|---|
| Exterior | Wood, Brick |
| Exterior Features | Back Lane, Fenced, Landscaped, Park/Reserve, Playground Nearby, Public Transportation, Schools, Shopping Nearby, View Downtown, See Remarks |
| Roof | Asphalt Shingles |
| Construction | Wood, Brick |
| Foundation | Block, Brick, Stone |

School Information

| | |
|------------|----------------------------|
| Elementary | Delton/St. Alphonsus |
| Middle | Spruce Avenue/St. Alphonsu |
| High | Victoria/St. Joseph |

Additional Information

| | |
|-------------|------------------|
| Date Listed | April 28th, 2025 |
|-------------|------------------|

Days on Market 99

Zoning Zone 05

DATA IS DEEMED RELIABLE BUT IS NOT GUARANTEED ACCURATE BY THE REALTORS® ASSOCIATION OF EDMONTON. COPYRIGHT 2025 BY THE REALTORS® ASSOCIATION OF EDMONTON. ALL RIGHTS RESERVED. Trademarks are owned or controlled by the Canadian Real Estate Association (CREA) and identify real estate professionals who are members of CREA (REALTOR®, REALTORS®) and/or the quality of services they provide (MLS®, Multiple Listing Service®)

Listing information last updated on August 5th, 2025 at 4:03pm MDT