

\$1,490,000 - Hwy 866 Township Road 610, Rural St. Paul County

MLS® #E4433174

\$1,490,000

0 Bedroom, 0.00 Bathroom,

Business with Property on 0.00 Acres

None, Rural St. Paul County, AB

BE YOUR OWN BOSS! GAS STATION & GROCERY W/ LIQUOR STORE. FULLY RENOVATED STORE & HOUSE. 1300 SQFT HOUSE W/ DBL GARAGE AT BACK OF STORE. A THRIVING BUSINESS WITH GREAT POTENTIAL FOR GROWTH. SHOWING EXCELLENT RETURN WITH ACTIVE CLIENTELE. THIS IS A VERY BUSY STORE. OPEN 8AM - 9 PM (MON - FRI) / 9AM-7PM (SAT-SUN). A GOLDEN OPPOTUNITY! HWY 866 NORTH OF HWY 28 W OF HWY 36. 50 KM

Built in 1995



Essential Information

MLS® #	E4433174
Price	\$1,490,000
Bathrooms	0.00
Acres	0.00
Year Built	1995
Type	Business with Property
Status	Active

Community Information

Address	Hwy 866 Township Road 610
Area	Rural St. Paul County
Subdivision	None

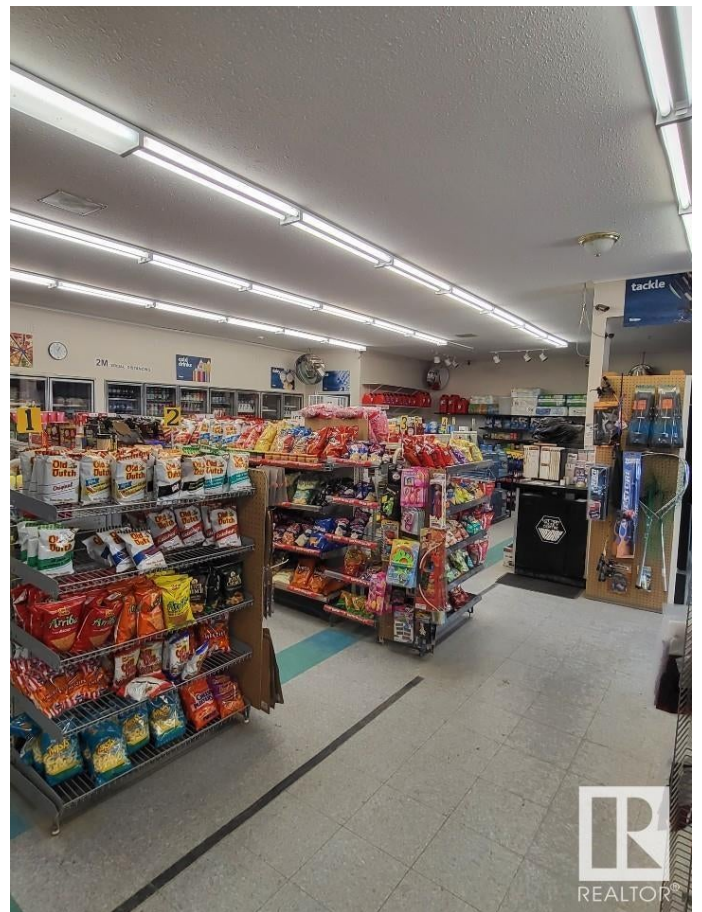
City Rural St. Paul County
County ALBERTA
Province AB
Postal Code T0A 0N0

Exterior

Exterior Wood Frame
Construction Wood Frame

Additional Information

Date Listed April 28th, 2025
Days on Market 2
Zoning Zone 60



DATA IS DEEMED RELIABLE BUT IS NOT GUARANTEED ACCURATE BY THE REALTORS® ASSOCIATION OF EDMONTON. COPYRIGHT 2025 BY THE REALTORS® ASSOCIATION OF EDMONTON. ALL RIGHTS RESERVED. Trademarks are owned or controlled by the Canadian Real Estate Association (CREA) and identify real estate professionals who are members of CREA (REALTOR®, REALTORS®) and/or the quality of services they provide (MLS®, Multiple Listing Service®). Listing information last updated on April 30th, 2025 at 6:32pm MDT

