

\$699,999 - 40 Raspberry Road, St. Albert

MLS® #E4433365

\$699,999

4 Bedroom, 3.50 Bathroom, 2,312 sqft

Single Family on 0.00 Acres

Riverside (St. Albert), St. Albert, AB

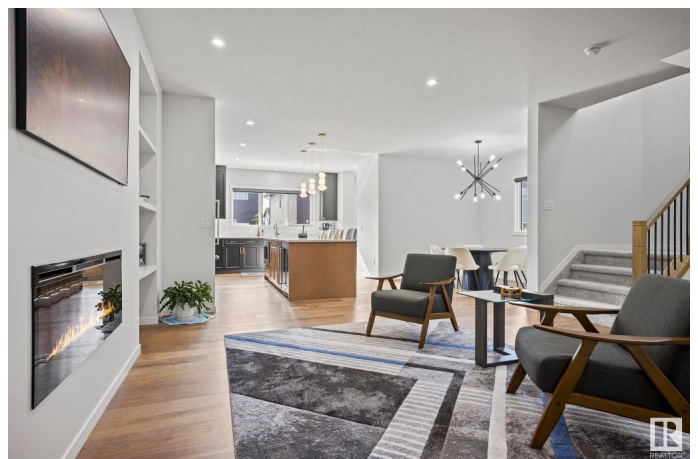
WELCOME to this BEAUTIFUL FAMILY HOME featuring 4 BEDROOMS, 3.5 BATHS, FULLY FINISHED BASEMENT, RARE 200AMP ELECTRICAL SERVICE, HEATED GARAGE & over 3200sqft of FINISHED open-concept living in desirable Riverside! Inside, you're welcomed by soaring 9' ceilings & expansive south-facing windows that flood the space with fresh natural light. You'll love your BRIGHT UPGRADED KITCHEN with quartz countertops, INDUCTION STOVE, SS appliances, & MASSIVE ISLAND perfect for family gatherings. Enjoy your spacious MUDROOM offering plenty of storage for all your shoes, bags, etc! Upstairs you have 3 generous bedrooms, including a stunning primary retreat with SPA-LIKE ENSUITE, a large bonus room, & convenient laundry. You'll LOVE the FULLY FINISHED BASEMENT with 4th bedroom, full bath, & BIG LIVING ROOM, perfect for teenagers or movie nights! Energy efficient with TRIPLE PANE WINDOWS & solar ready! Enjoy all the beautiful walking trails, ponds, parks, shopping, coffee spots, & quick access to the Henday. WELCOME HOME!

Built in 2024

Essential Information

MLS® #

E4433365



Price	\$699,999
Bedrooms	4
Bathrooms	3.50
Full Baths	3
Half Baths	1
Square Footage	2,312
Acres	0.00
Year Built	2024
Type	Single Family
Sub-Type	Detached Single Family
Style	2 Storey
Status	Active

Community Information

Address	40 Raspberry Road
Area	St. Albert
Subdivision	Riverside (St. Albert)
City	St. Albert
County	ALBERTA
Province	AB
Postal Code	T8N 8A3

Amenities

Amenities	Ceiling 9 ft., No Smoking Home
Parking Spaces	2
Parking	Double Garage Attached

Interior

Interior Features	ensuite bathroom
Appliances	Dishwasher-Built-In, Dryer, Freezer, Oven-Microwave, Refrigerator, Stove-Electric, Washer, Window Coverings, See Remarks
Heating	Forced Air-1, Natural Gas
Fireplace	Yes
Fireplaces	Insert
Stories	3
Has Basement	Yes
Basement	Full, Finished

Exterior

Exterior	Wood, Vinyl
Exterior Features	Golf Nearby, Playground Nearby, Public Transportation, Shopping Nearby
Roof	Asphalt Shingles
Construction	Wood, Vinyl
Foundation	Concrete Perimeter

Additional Information

Date Listed	April 30th, 2025
Days on Market	13
Zoning	Zone 24

DATA IS DEEMED RELIABLE BUT IS NOT GUARANTEED ACCURATE BY THE REALTORS® ASSOCIATION OF EDMONTON. COPYRIGHT 2025 BY THE REALTORS® ASSOCIATION OF EDMONTON. ALL RIGHTS RESERVED.Trademarks are owned or controlled by the Canadian Real Estate Association (CREA) and identify real estate professionals who are members of CREA (REALTOR®, REALTORS®) and/or the quality of services they provide (MLS®, Multiple Listing Service®)

Listing information last updated on May 14th, 2025 at 3:32am MDT