

\$555,000 - 6051 165 Avenue, Edmonton

MLS® #E4433791

\$555,000

5 Bedroom, 3.00 Bathroom, 1,824 sqft

Single Family on 0.00 Acres

Matt Berry, Edmonton, AB

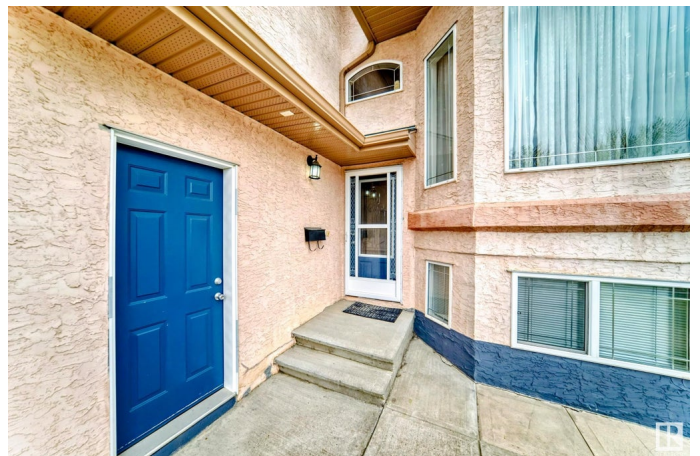
Beautifully designed Bi-Level Family Home offering Comfortable Living Space. Fully Finished Basement w/Separate Entry from Insulated Double Attached Garage w/Side entryâ€”perfect for extended family or guests. Step inside to discover Formal Dining Room & Bright Family Room. Vaulted Ceilings & 9' ceiling throughout, creating an open, airy atmosphere. Hardwood & Ceramic Tile adds to the Beautiful Class of this Home & Wrought Iron Railing leading to the generous sized Primary Bedroom complete w/Walk-in closet. Spacious Ensuite featuring Soaker Tub & Separate Shower for ultimate relaxation. Open-concept Kitchen boasts Granite countertops, ample cabinet space, that flows seamlessly into second Living area, ideal for entertaining. Garden Door leads to Deck and low-maintenance backyard, perfect for summer gatherings. Your Home offers 3 + 2 Bedrooms w/Huge Recreation Roomâ€”ideal for a home theatre, gym, or playroom. Well-appointed Laundry Room includes convenient Laundry Sink. Welcome Home!!

Built in 2006

Essential Information

MLS® # E4433791

Price \$555,000



Bedrooms	5
Bathrooms	3.00
Full Baths	3
Square Footage	1,824
Acres	0.00
Year Built	2006
Type	Single Family
Sub-Type	Detached Single Family
Style	Bi-Level
Status	Active

Community Information

Address	6051 165 Avenue
Area	Edmonton
Subdivision	Matt Berry
City	Edmonton
County	ALBERTA
Province	AB
Postal Code	T5Y 0A8

Amenities

Amenities	On Street Parking, Ceiling 9 ft., Deck, Exterior Walls- 2"x6", Hot Water Natural Gas, No Smoking Home, Vaulted Ceiling, Vinyl Windows
Parking Spaces	4
Parking	Double Garage Attached, Insulated

Interior

Interior Features	ensuite bathroom
Appliances	Dishwasher-Built-In, Dryer, Fan-Ceiling, Garage Control, Garage Opener, Hood Fan, Oven-Microwave, Refrigerator, Stove-Electric, Washer, Window Coverings
Heating	Forced Air-1, Natural Gas
Stories	3
Has Basement	Yes
Basement	Full, Finished

Exterior

Exterior	Wood, Stucco
Exterior Features	Fenced, Flat Site, Landscaped, Low Maintenance Landscape,

Playground Nearby, Public Transportation, Schools, Shopping Nearby

Roof	Asphalt Shingles
Construction	Wood, Stucco
Foundation	Concrete Perimeter

Additional Information

Date Listed	May 1st, 2025
Days on Market	2
Zoning	Zone 03

DATA IS DEEMED RELIABLE BUT IS NOT GUARANTEED ACCURATE BY THE REALTORS® ASSOCIATION OF EDMONTON. COPYRIGHT 2025 BY THE REALTORS® ASSOCIATION OF EDMONTON. ALL RIGHTS RESERVED.Trademarks are owned or controlled by the Canadian Real Estate Association (CREA) and identify real estate professionals who are members of CREA (REALTOR®, REALTORS®) and/or the quality of services they provide (MLS®, Multiple Listing Service®)

Listing information last updated on May 3rd, 2025 at 6:17pm MDT