

\$499,555 - 18465 121 Avenue, Edmonton

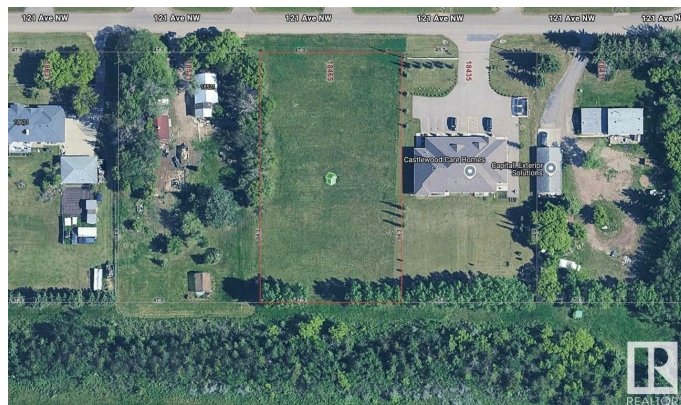
MLS® #E4435389

\$499,555

0 Bedroom, 0.00 Bathroom,
Single Family on 0.00 Acres

Kinokamau Plains Area, Edmonton, AB

Custom build your very own dream home with a BIG SHOP? Or simply looking for a quiet acreage but do not want to be too far from the city? Here is a 1 acre of land with endless opportunities! Don't miss this incredible opportunity to own a rare 1-acre parcel in Northwest Edmonton, just 7 km from West Edmonton Mall & only a couple minutes to public transit! Enjoy ultra-convenient access to the Anthony Henday and Yellowhead Highway, making commuting a breeze. With flexible RR zoning, this lot offers endless potential for development or investment. Spacious dimensions of 157.1 ft x 276.7 ft make it a prime piece of real estate in a highly desirable location.



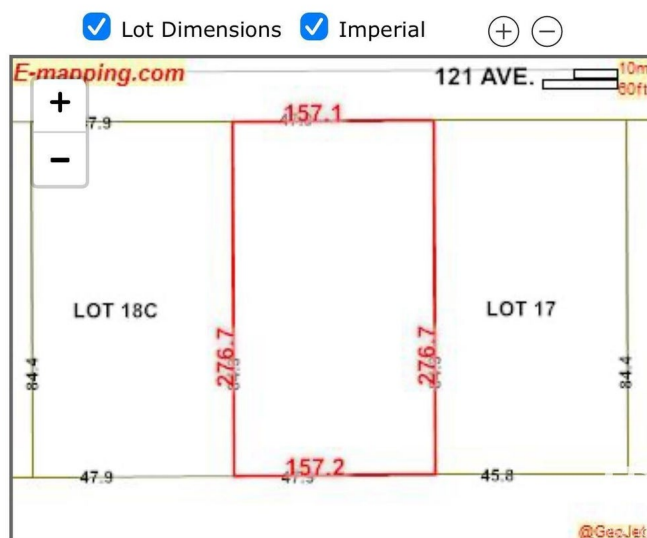
Property Address: 18465 121 Avenue, EDMONTON T5V1R2

Essential Information

MLS® #	E4435389
Price	\$499,555
Bathrooms	0.00
Acres	0.00
Type	Single Family
Sub-Type	Vacant Lot/Land
Status	Active

Community Information

Address 18465 121 Avenue



Area	Edmonton
Subdivision	Kinokamau Plains Area
City	Edmonton
County	ALBERTA
Province	AB
Postal Code	T5V 1R2

Exterior

Exterior Features	Shopping Nearby
Lot Description	157.1 ft x 276.7 ft

Additional Information

Date Listed	May 5th, 2025
Days on Market	8
Zoning	Zone 40

DATA IS DEEMED RELIABLE BUT IS NOT GUARANTEED ACCURATE BY THE REALTORS® ASSOCIATION OF EDMONTON. COPYRIGHT 2025 BY THE REALTORS® ASSOCIATION OF EDMONTON. ALL RIGHTS RESERVED. Trademarks are owned or controlled by the Canadian Real Estate Association (CREA) and identify real estate professionals who are members of CREA (REALTOR®, REALTORS®) and/or the quality of services they provide (MLS®, Multiple Listing Service®)

Listing information last updated on May 14th, 2025 at 2:17am MDT