

## \$465,000 - 43 Calista Way, Spruce Grove

MLS® #E4435783

**\$465,000**

3 Bedroom, 2.50 Bathroom, 1,702 sqft

Single Family on 0.00 Acres

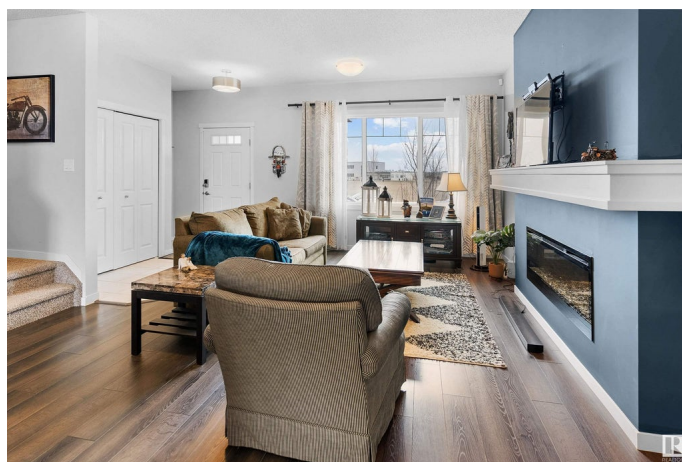
Copperhaven, Spruce Grove, AB

Welcome to this family-friendly 3 bedroom, 2.5 bathroom 2-storey home ideally located across from Copperhaven School! Just steps from scenic walking trails and a pond, this home offers an ideal blend of comfort and convenience. The main floor features 9'™ ceilings, a stylish electric fireplace in the living room, quartz kitchen countertops, a large eating-bar island, and a bright dining area that overlooks the south-facing backyard. Step out onto the back deck—perfect for outdoor meals and entertaining. A rear mudroom with main floor laundry adds everyday function. Upstairs offers a versatile bonus room, two secondary bedrooms, and a spacious primary suite complete with walk-in closet and private ensuite. A detached double garage provides ample parking and storage. Located in a vibrant, walkable community close to schools, parks, and nature—this is the perfect place to call home!

Built in 2018

### Essential Information

MLS® #	E4435783
Price	\$465,000
Bedrooms	3
Bathrooms	2.50
Full Baths	2



Half Baths	1
Square Footage	1,702
Acres	0.00
Year Built	2018
Type	Single Family
Sub-Type	Detached Single Family
Style	2 Storey
Status	Active

### Community Information

Address	43 Calista Way
Area	Spruce Grove
Subdivision	Copperhaven
City	Spruce Grove
County	ALBERTA
Province	AB
Postal Code	T7X 0Y7

### Amenities

Amenities	Ceiling 9 ft., Deck, No Animal Home, No Smoking Home, Storage-In-Suite, HRV System, 9 ft. Basement Ceiling
Parking	Double Garage Detached, Rear Drive Access

### Interior

Interior Features	ensuite bathroom
Appliances	Dishwasher-Built-In, Dryer, Garage Control, Garage Opener, Microwave Hood Fan, Refrigerator, Stove-Electric, Washer
Heating	Forced Air-1, Natural Gas
Fireplace	Yes
Fireplaces	Wall Mount
Stories	2
Has Basement	Yes
Basement	Full, Unfinished

### Exterior

Exterior	Wood, Vinyl
Exterior Features	Back Lane, Golf Nearby, Not Fenced, Schools, Shopping Nearby
Roof	Asphalt Shingles
Construction	Wood, Vinyl

Foundation                      Concrete Perimeter

**School Information**

Elementary                      Copperhaven School K - 9  
High                                Spruce Grove Composite

**Additional Information**

Date Listed                      May 10th, 2025  
Days on Market                3  
Zoning                              Zone 91

DATA IS DEEMED RELIABLE BUT IS NOT GUARANTEED ACCURATE BY THE REALTORS® ASSOCIATION OF EDMONTON. COPYRIGHT 2025 BY THE REALTORS® ASSOCIATION OF EDMONTON. ALL RIGHTS RESERVED.Trademarks are owned or controlled by the Canadian Real Estate Association (CREA) and identify real estate professionals who are members of CREA (REALTOR®, REALTORS®) and/or the quality of services they provide (MLS®, Multiple Listing Service®)  
Listing information last updated on May 13th, 2025 at 1:47pm MDT