

\$499,000 - 11 Coachman Way, Sherwood Park

MLS® #E4438164

\$499,000

4 Bedroom, 3.00 Bathroom, 1,268 sqft
Single Family on 0.00 Acres

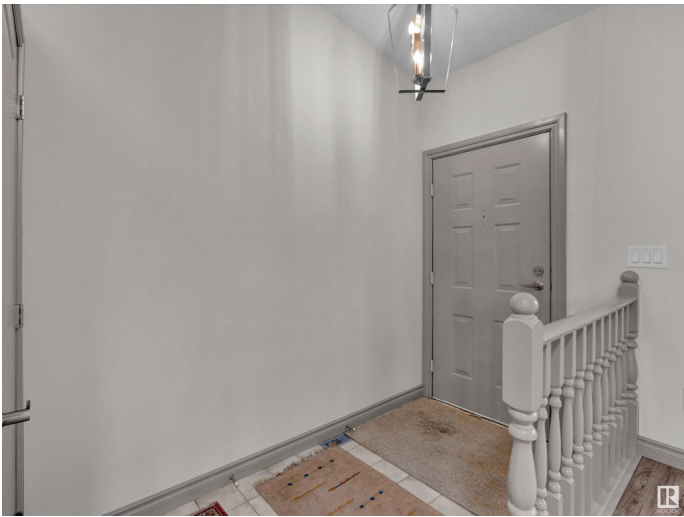
Clover Bar Ranch, Sherwood Park, AB

Discover exceptional family living at 11 Coachman Way in desirable Sherwood Park! This beautifully maintained split-level home offers approximately 1268 sq ft (117.8 mÂ²), 4 bedrooms (3 above grade), and 3 full bathrooms. The heart of the home is the stunningly upgraded kitchen, featuring rich dark cabinetry, sleek quartz countertops, stainless steel appliances, a functional island with pendant lighting, and modern pot lights. Bright and inviting, the main living area boasts fresh neutral paint, durable laminate flooring, and a large bay window that floods the space with natural light. Enjoy distinct living zones perfect for family life, including a cozy lower-level family room complete with a charming fireplace. Outside, find mature landscaping and the convenience of a double attached garage. Located in a family-friendly community renowned for excellent schools, parks, extensive walking trails, and easy access to shopping.

Built in 1986

Essential Information

MLS® #	E4438164
Price	\$499,000
Bedrooms	4
Bathrooms	3.00



Full Baths	3
Square Footage	1,268
Acres	0.00
Year Built	1986
Type	Single Family
Sub-Type	Detached Single Family
Style	Bungalow
Status	Active

Community Information

Address	11 Coachman Way
Area	Sherwood Park
Subdivision	Clover Bar Ranch
City	Sherwood Park
County	ALBERTA
Province	AB
Postal Code	T8H 1C5

Amenities

Amenities	See Remarks
Parking Spaces	4
Parking	Double Garage Attached

Interior

Interior Features	ensuite bathroom
Appliances	Dishwasher-Built-In, Dryer, Garage Control, Garage Opener, Microwave Hood Fan, Refrigerator, Stove-Electric, Washer, Window Coverings
Heating	Forced Air-1, Natural Gas
Fireplace	Yes
Fireplaces	Mantel
Stories	4
Has Basement	Yes
Basement	Full, Finished

Exterior

Exterior	Wood, Stucco
Exterior Features	Fenced, Park/Reserve, Schools, Shopping Nearby
Roof	Asphalt Shingles
Construction	Wood, Stucco

Foundation Concrete Perimeter

Additional Information

Date Listed May 23rd, 2025

Days on Market 24

Zoning Zone 25

DATA IS DEEMED RELIABLE BUT IS NOT GUARANTEED ACCURATE BY THE REALTORS® ASSOCIATION OF EDMONTON. COPYRIGHT 2025 BY THE REALTORS® ASSOCIATION OF EDMONTON. ALL RIGHTS RESERVED.Trademarks are owned or controlled by the Canadian Real Estate Association (CREA) and identify real estate professionals who are members of CREA (REALTOR®, REALTORS®) and/or the quality of services they provide (MLS®, Multiple Listing Service®)

Listing information last updated on June 16th, 2025 at 8:32pm MDT