

\$849,900 - 38 22430 Twp Rd 520, Rural Strathcona County

MLS® #E4439301

\$849,900

3 Bedroom, 3.00 Bathroom, 2,008 sqft

Rural on 3.00 Acres

None, Rural Strathcona County, AB

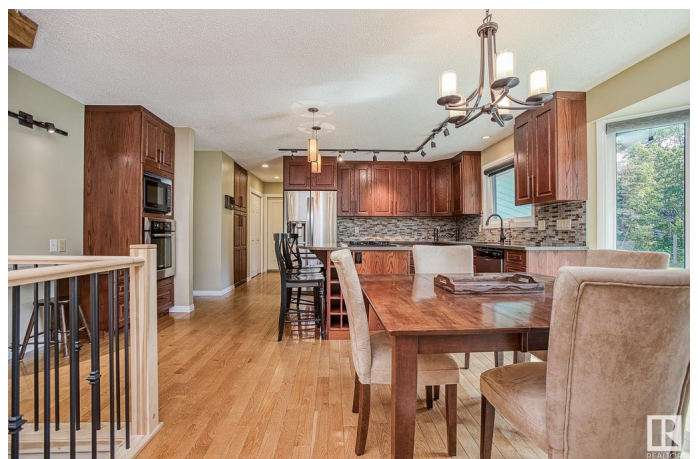
CUSTOM DESIGNED WALKOUT BUNGALOW on 3 Acres of sought after private & quiet, treed & cleared land, only 9 minutes from Sherwood Park. MAIN FLOOR â€œ Open Concept with over 2000 sqft + additional heated â€œ3 Season Roomâ€œ. From the Kitchen with breakfast nook to the Living & Family Room (both with Fireplaces) youâ€™ll be wowed. Primary Bedroom with walk in closet & Huge 5 pce EN-SUITE. Main Floor Laundry. DOWNSTAIRS - 1743sqft, 2 Bedrooms with large windows, partially completed 4 pce Bathroom, Massive Family Room with Fireplace and patio doors. Spacious Art Studio / Workshop with adjoining Den. OVERSIZED INSULATED GARAGE (29ft x 23â€™9â€œ), with gas hookup & extra power. Uses Filtered Well Water & option to switch to Cistern setup, HWT (2025), 2 High Efficient Furnaces (2022 & 2011), roof, windows, kitchen, hardwood flooring, and much more were maintained/updated. Land has space for a shop or horses. Estate Sale, As-Is, Where-Is. DON'T MISS OUT!

Built in 1978

Essential Information

MLS® #

E4439301



| | |
|----------------|------------------------|
| Price | \$849,900 |
| Bedrooms | 3 |
| Bathrooms | 3.00 |
| Full Baths | 2 |
| Half Baths | 2 |
| Square Footage | 2,008 |
| Acres | 3.00 |
| Year Built | 1978 |
| Type | Rural |
| Sub-Type | Detached Single Family |
| Style | Hillside Bungalow |
| Status | Active |

Community Information

| | |
|-------------|-------------------------|
| Address | 38 22430 Twp Rd 520 |
| Area | Rural Strathcona County |
| Subdivision | None |
| City | Rural Strathcona County |
| County | ALBERTA |
| Province | AB |
| Postal Code | T8C 1E6 |

Amenities

| | |
|----------------|---|
| Features | Carbon Monoxide Detectors, Deck, Detectors Smoke, Fire Pit, Hot Water Natural Gas, Vinyl Windows, Walkout Basement, See Remarks, Natural Gas BBQ Hookup |
| Parking Spaces | 10 |

Interior

| | |
|-------------------|---------------------------|
| Interior Features | ensuite bathroom |
| Heating | Forced Air-2, Natural Gas |
| Fireplace | Yes |
| Stories | 2 |
| Has Basement | Yes |
| Basement | Full, Finished |

Exterior

| | |
|-------------------|---|
| Exterior | Wood |
| Exterior Features | Airport Nearby, Golf Nearby, Hillside, Landscaped, No Through Road, |

Private Setting, Schools, Stream/Pond, Treed Lot, Vegetable Garden,
See Remarks

Construction Wood

Foundation Concrete Perimeter

Additional Information

Date Listed May 29th, 2025

Days on Market 18

Zoning Zone 80

DATA IS DEEMED RELIABLE BUT IS NOT GUARANTEED ACCURATE BY THE REALTORS® ASSOCIATION OF EDMONTON. COPYRIGHT 2025 BY THE REALTORS® ASSOCIATION OF EDMONTON. ALL RIGHTS RESERVED. Trademarks are owned or controlled by the Canadian Real Estate Association (CREA) and identify real estate professionals who are members of CREA (REALTOR®, REALTORS®) and/or the quality of services they provide (MLS®, Multiple Listing Service®)

Listing information last updated on June 16th, 2025 at 9:17pm MDT