

\$479,000 - 64 Aspen Crescent, St. Albert

MLS® #E4439712

\$479,000

5 Bedroom, 2.50 Bathroom, 1,280 sqft

Single Family on 0.00 Acres

Akinsdale, St. Albert, AB

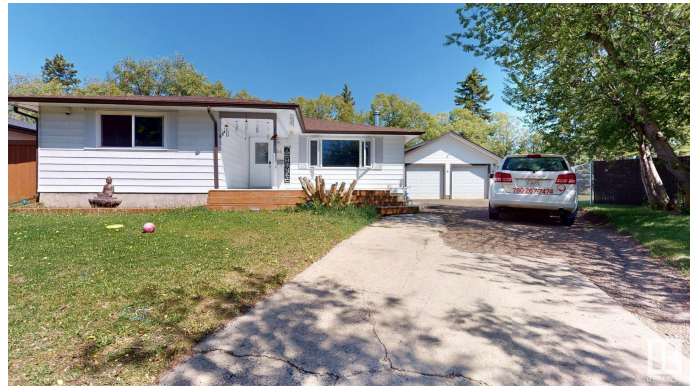
This spacious home with a large driveway is situated on a generous pie-shaped lot. The main floor features a spacious living room, separate dining area, and kitchen. There are three generously sized bedrooms, including a primary bedroom with its own ensuite bathroom, plus a second full bathroom on the main level. The FULLY FINISHED BASEMENT with SEPARATE ENTRANCE offers heated flooring and includes 2 bedrooms, a full bathroom, a second living room, second kitchen, den, laundry area, and a storage room—ideal for guests, extended family. The furnace room also provides additional storage, and overall, there is an abundance of storage space throughout the home. Outside, the property features a massive garage, RV parking at the back, and a large driveway that easily accommodates 7-8 vehicles. A storage shed & extra storage areas. Recent updates include upgraded electrical sockets. Ample natural light throughout home creates a warm and welcoming atmosphere. Theatre setup in garage ; disco led lights also there

Built in 1974

Essential Information

MLS® # E4439712

Price \$479,000



Bedrooms	5
Bathrooms	2.50
Full Baths	2
Half Baths	1
Square Footage	1,280
Acres	0.00
Year Built	1974
Type	Single Family
Sub-Type	Detached Single Family
Style	Bungalow
Status	Active

Community Information

Address	64 Aspen Crescent
Area	St. Albert
Subdivision	Akinsdale
City	St. Albert
County	ALBERTA
Province	AB
Postal Code	T8N 2L8

Amenities

Amenities	Deck, Detectors Smoke
Parking	Double Garage Detached

Interior

Interior Features	ensuite bathroom
Appliances	Air Conditioning-Central, Dryer, Oven-Microwave, Washer, Refrigerators-Two, Stoves-Two, Garage Heater
Heating	Forced Air-1, Natural Gas
Stories	2
Has Suite	Yes
Has Basement	Yes
Basement	Full, Finished

Exterior

Exterior	Wood, Metal, Stucco
Exterior Features	Fenced, Playground Nearby, Public Transportation, Schools, Shopping Nearby

Roof	Asphalt Shingles
Construction	Wood, Metal, Stucco
Foundation	Concrete Perimeter

School Information

Elementary	Vital Grandin Catholic Sch
Middle	Ecole Secondaire Sainte Ma
High	Ecole Secondaire Sainte M

Additional Information

Date Listed	May 31st, 2025
Days on Market	21
Zoning	Zone 24

DATA IS DEEMED RELIABLE BUT IS NOT GUARANTEED ACCURATE BY THE REALTORS® ASSOCIATION OF EDMONTON. COPYRIGHT 2025 BY THE REALTORS® ASSOCIATION OF EDMONTON. ALL RIGHTS RESERVED. Trademarks are owned or controlled by the Canadian Real Estate Association (CREA) and identify real estate professionals who are members of CREA (REALTOR®, REALTORS®) and/or the quality of services they provide (MLS®, Multiple Listing Service®)

Listing information last updated on June 21st, 2025 at 1:17pm MDT