

\$579,900 - 19, 57104 Hwy 38, Waterdale Park, Rural Sturgeon County

MLS® #E4439722

\$579,900

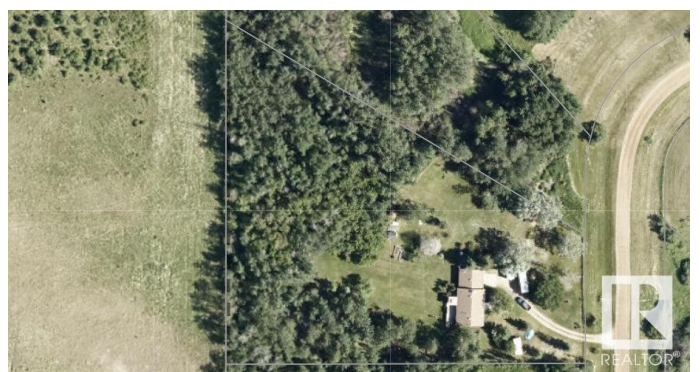
4 Bedroom, 2.00 Bathroom, 1,262 sqft

Rural on 3.04 Acres

Waterdale Park, Rural Sturgeon County, AB

BEAUTIFUL REDWATER ACREAGE!

Welcome to #19 Ivan Road, here in Waterdale Park just outside Redwater! This well maintained home sits on 3 fenced & gated beautiful acres, with a large back deck, open grassy yard surrounded by trees, raised flower /veg gardens, 3 garden sheds and wood gazebo. As you enter this cozy home, the living room has a beautiful stone (wood) fireplace to cozy up around. Open concept dining rm /kitchen counters are granite, patio doors opening onto the back deck & yard. 2 bdrms and a 4pc bathrm w/ luxury steam shower. Basement has a separate entrance w/a full kitchen and 2 more bdrms. 2nd living room has a stone (gas) fireplace. Attached double heated garage for parking, carport & room to store RV and more. The yard is beautiful, quiet & private, and often you can see wildlife! Nearby Redwater offers: jobs, k-12 school, arena, pool, golf, shopping, restaurants, hospital & more! on the school bus route! **GREAT PROPERTY!! DON'T MISS OUT!**



Built in 1992

Essential Information

MLS® #

E4439722

| | |
|----------------|------------------------|
| Price | \$579,900 |
| Bedrooms | 4 |
| Bathrooms | 2.00 |
| Full Baths | 2 |
| Square Footage | 1,262 |
| Acres | 3.04 |
| Year Built | 1992 |
| Type | Rural |
| Sub-Type | Detached Single Family |
| Style | Bungalow |
| Status | Active |

Community Information

| | |
|-------------|----------------------------------|
| Address | 19, 57104 Hwy 38, Waterdale Park |
| Area | Rural Sturgeon County |
| Subdivision | Waterdale Park |
| City | Rural Sturgeon County |
| County | ALBERTA |
| Province | AB |
| Postal Code | T0A 2W0 |

Amenities

| | |
|----------|--|
| Features | Deck, Fire Pit, Gazebo, Greenhouse, Parking-Extra, Parking-Plug-Ins, R.V. Storage, Vinyl Windows |
|----------|--|

Interior

| | |
|--------------|---------------------------|
| Heating | Forced Air-1, Natural Gas |
| Fireplace | Yes |
| Stories | 2 |
| Has Basement | Yes |
| Basement | Full, Finished |

Exterior

| | |
|-------------------|---|
| Exterior | Wood |
| Exterior Features | Backs Onto Park/Trees, Environmental Reserve, Fenced, Golf Nearby, Landscaped, Private Setting, Schools, Shopping Nearby, Treed Lot, Vegetable Garden |
| Construction | Wood |
| Foundation | Concrete Perimeter |

Additional Information

Date Listed May 31st, 2025
Days on Market 20
Zoning Zone 60

DATA IS DEEMED RELIABLE BUT IS NOT GUARANTEED ACCURATE BY THE REALTORS® ASSOCIATION OF EDMONTON. COPYRIGHT 2025 BY THE REALTORS® ASSOCIATION OF EDMONTON. ALL RIGHTS RESERVED.Trademarks are owned or controlled by the Canadian Real Estate Association (CREA) and identify real estate professionals who are members of CREA (REALTOR®, REALTORS®) and/or the quality of services they provide (MLS®, Multiple Listing Service®)
Listing information last updated on June 20th, 2025 at 3:17am MDT