

\$265,000 - #102 2203 44 Ave, Edmonton

MLS® #E4439735

\$265,000

2 Bedroom, 2.00 Bathroom, 947 sqft
Condo / Townhouse on 0.00 Acres

Larkspur, Edmonton, AB

Welcome to Aspen Meadows! This former Landmark show home is a beautifully maintained main-floor condo offering 2 bedrooms, 2 full bathrooms, and 947 sq ft of functional living space. The modern kitchen features granite countertops, stainless steel appliances, and plenty of counter space. Enjoy the bright living room with access to a private patio with gas BBQ hookup. The spacious primary bedroom includes a walk-through closet and 4-piece ensuite. The second bedroom and bathroom are well-separated for added privacy. Additional features include hardwood flooring, in-suite laundry with built-in shelving, one underground parking stall with storage, plus an additional surface stall. The building offers great amenities including an exercise room, meeting room, and ample visitor parking. Located close to parks, trails, shopping, transit, and with easy access to Whitemud and Anthony Henday.

Built in 2013

Essential Information

MLS® #	E4439735
Price	\$265,000
Bedrooms	2
Bathrooms	2.00
Full Baths	2



Square Footage	947
Acres	0.00
Year Built	2013
Type	Condo / Townhouse
Sub-Type	Lowrise Apartment
Style	Single Level Apartment
Status	Active

Community Information

Address	#102 2203 44 Ave
Area	Edmonton
Subdivision	Larkspur
City	Edmonton
County	ALBERTA
Province	AB
Postal Code	T6T 0T1

Amenities

Amenities	Rooftop Deck/Patio
Parking Spaces	2
Parking	Stall, Underground

Interior

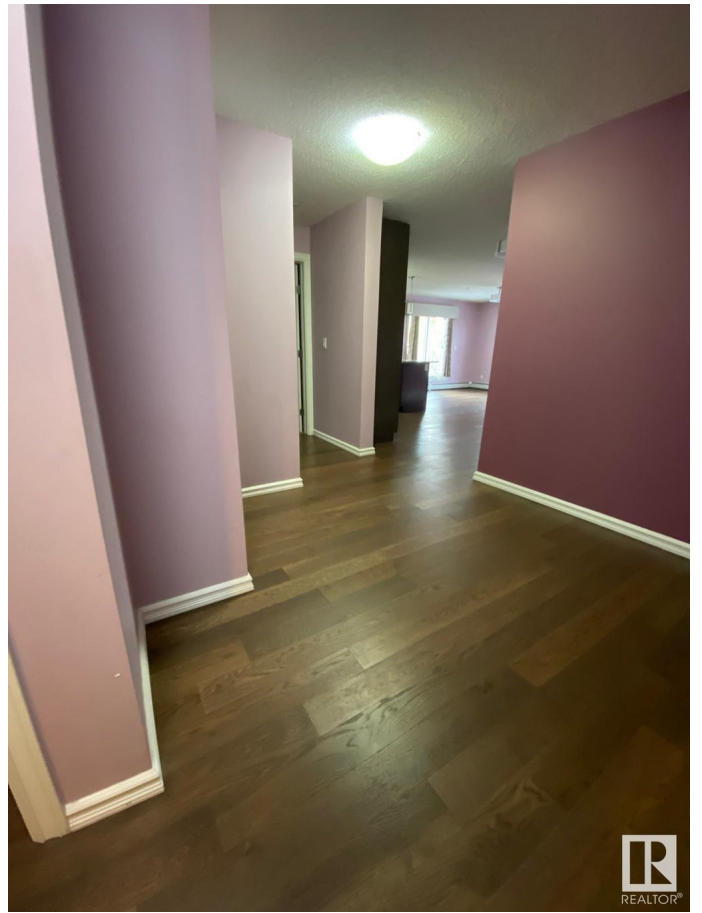
Interior Features	ensuite bathroom
Appliances	Dishwasher-Built-In, Dryer, Microwave Hood Fan, Refrigerator, Stove-Electric, Washer
Heating	Baseboard, Natural Gas
# of Stories	4
Stories	1
Has Basement	Yes
Basement	None, No Basement

Exterior

Exterior	Steel, Brick, Vinyl
Exterior Features	Commercial, Playground Nearby, Public Transportation, Schools, Shopping Nearby
Roof	Asphalt Shingles
Construction	Steel, Brick, Vinyl
Foundation	Concrete Perimeter

Additional Information

Date Listed May 31st, 2025
Days on Market 16
Zoning Zone 30
Condo Fee \$650



DATA IS DEEMED RELIABLE BUT IS NOT GUARANTEED ACCURATE BY THE REALTORS® ASSOCIATION OF EDMONTON. COPYRIGHT 2025 BY THE REALTORS® ASSOCIATION OF EDMONTON. ALL RIGHTS RESERVED. Trademarks are owned or controlled by the Canadian Real Estate Association (CREA) and identify real estate professionals who are members of CREA (REALTOR®, REALTORS®) and/or the quality of services they provide (MLS®, Multiple Listing Service®)

Listing information last updated on June 16th, 2025 at 6:02pm MDT