

\$189,900 - 1620 48 Street, Edmonton

MLS® #E4440790

\$189,900

3 Bedroom, 2.00 Bathroom, 1,248 sqft

Condo / Townhouse on 0.00 Acres

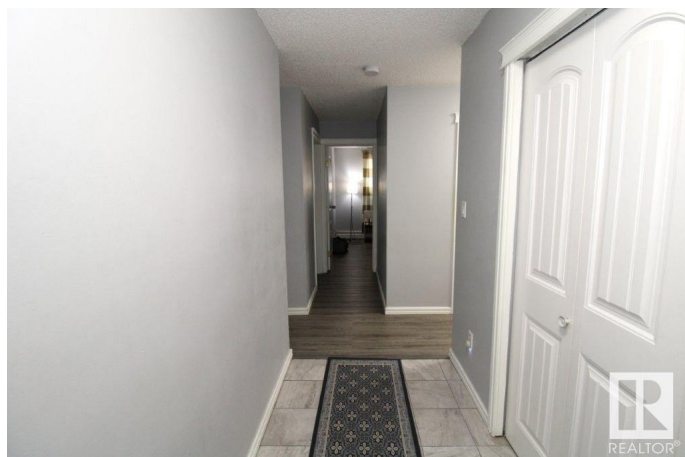
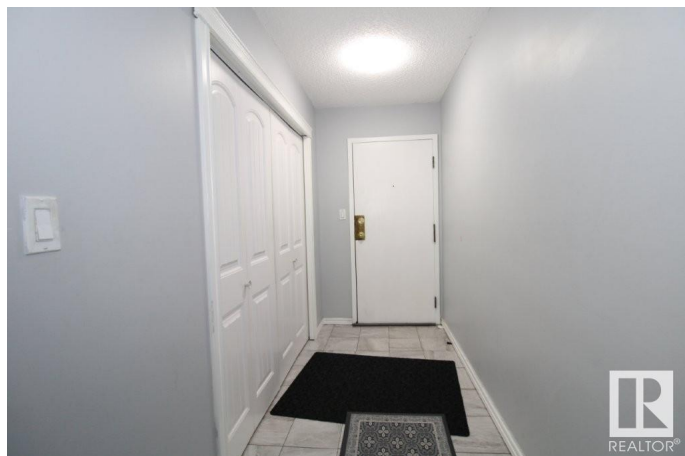
Pollard Meadows, Edmonton, AB

THIS BRIGHT AND UPDATED 3 BEDROOM, 2 BATH APARTMENT IS MOVE IN READY AND PERFECTLY LOCATED IN THE HEART OF MILLWOODS, COMMUNITY OF POLLARD MEADOWS. THIS SPACIOUS UNIT OFFERS A BRIGHT AND OPEN LAYOUT. A FUNCTIONAL KITCHEN IS PERFECT FOR EVERYDAY LIVING. ITS A GREAT FIT FOR FAMILIES, FIRST TIME BUYERS OR ANYONE LOOKING FOR LOW-MAINTENANCE HOME. YOU'LL LOVE BEING JUST STEPS AWAY FROM SHOPPING, SCHOOLS, PUBLIC TRANSIT, PARKS AND ALL THE AMENITIES YOU NEED. WHETHER YOU ARE A FIRST TIME BUYER, A DOWNSIZER, OR AN INVESTER-THIS ONE CHECKS ALL THE BOXES. A GREAT PLACE TO CALL HOME.

Built in 1981

Essential Information

MLS® #	E4440790
Price	\$189,900
Bedrooms	3
Bathrooms	2.00
Full Baths	2
Square Footage	1,248
Acres	0.00
Year Built	1981



Type	Condo / Townhouse
Sub-Type	Lowrise Apartment
Style	Single Level Apartment
Status	Active

Community Information

Address	1620 48 Street
Area	Edmonton
Subdivision	Pollard Meadows
City	Edmonton
County	ALBERTA
Province	AB
Postal Code	T6L 5P1

Amenities

Amenities	Intercom, No Animal Home, No Smoking Home, Parking-Plug-Ins, See Remarks
Parking	No Garage, Stall, See Remarks

Interior

Interior Features	ensuite bathroom
Appliances	Dishwasher-Built-In, Hood Fan, Intercom, Refrigerator, Stove-Electric, See Remarks, Curtains and Blinds
Heating	Baseboard, See Remarks, Natural Gas
# of Stories	4
Stories	4
Has Basement	Yes
Basement	None, No Basement

Exterior

Exterior	Wood, Stucco, See Remarks
Exterior Features	Commercial, Landscaped, Low Maintenance Landscape, Park/Reserve, Public Transportation, Schools, Shopping Nearby, See Remarks
Roof	Asphalt Shingles
Construction	Wood, Stucco, See Remarks
Foundation	Concrete Perimeter

School Information

Elementary	POLLARD MEADOWS
------------	-----------------

Additional Information

Date Listed	June 6th, 2025
Days on Market	9
Zoning	Zone 29
Condo Fee	\$714

DATA IS DEEMED RELIABLE BUT IS NOT GUARANTEED ACCURATE BY THE REALTORS® ASSOCIATION OF EDMONTON. COPYRIGHT 2025 BY THE REALTORS® ASSOCIATION OF EDMONTON. ALL RIGHTS RESERVED.Trademarks are owned or controlled by the Canadian Real Estate Association (CREA) and identify real estate professionals who are members of CREA (REALTOR®, REALTORS®) and/or the quality of services they provide (MLS®, Multiple Listing Service®)

Listing information last updated on June 15th, 2025 at 9:17pm MDT