

\$349,702 - 76 115 Chestermere Drive, Sherwood Park

MLS® #E4441394

\$349,702

4 Bedroom, 3.00 Bathroom, 1,230 sqft
Condo / Townhouse on 0.00 Acres

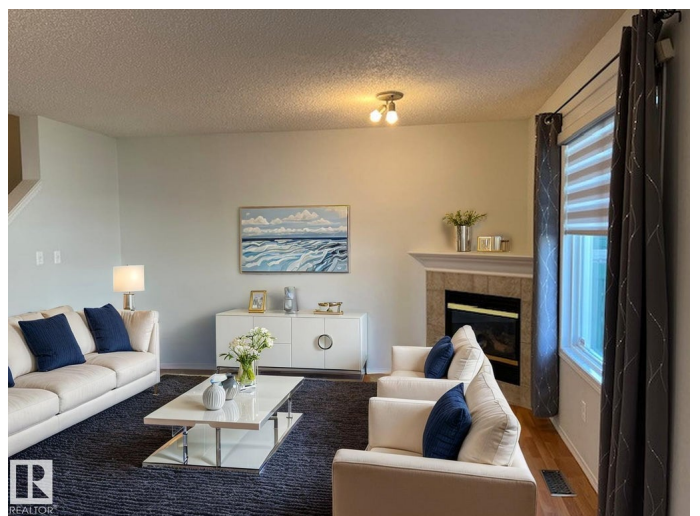
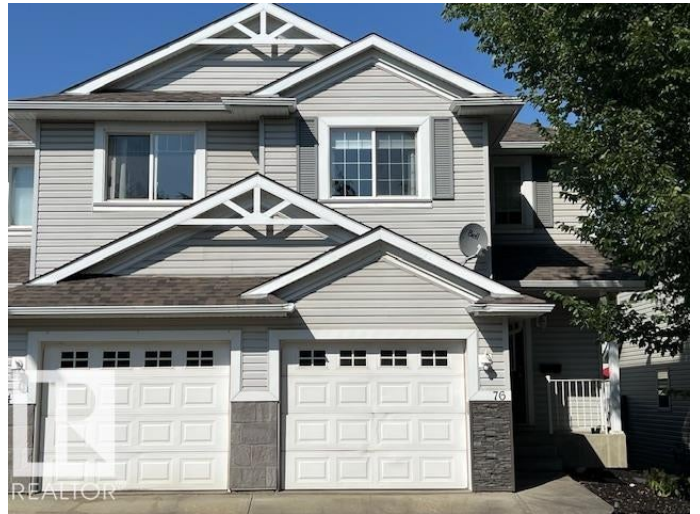
Lakeland Ridge, Sherwood Park, AB

BEAUTIFUL LAKELAND RIDGE...OVER 1200 Sq Ft with FINISHED BASEMENT...TOTAL 4 BEDROOMS/4 BATHS!...CENTRAL AIR CONDITIONING~!WELCOME HOME!~ Cheerful home with lots of natural light! OPEN CONCEPT, with good sized kitchen offering plenty of wood cabinets, & island that overlooks the dining area & living room with cozy gas fireplace. Convenient 2 pce bath on main as well. Primary bedroom has 3 pce ensuite! Two additional bedrooms & 4pc bath complete the upstairs. The fully finished basement with flex space, another bedroom, and 2 pce bath (with roughin for future shower). This home also comes with a nice size deck and fenced yard, ready for those summer BBQs! Just steps away from playgrounds, walking trails, shopping & schools. Great first home or investment property, and great location to call HOME!

Built in 2005

Essential Information

MLS® #	E4441394
Price	\$349,702
Bedrooms	4
Bathrooms	3.00
Full Baths	2
Half Baths	2



Square Footage	1,230
Acres	0.00
Year Built	2005
Type	Condo / Townhouse
Sub-Type	Half Duplex
Style	2 Storey
Status	Active

Community Information

Address	76 115 Chestermere Drive
Area	Sherwood Park
Subdivision	Lakeland Ridge
City	Sherwood Park
County	ALBERTA
Province	AB
Postal Code	T8H 2W4

Amenities

Amenities	Deck, See Remarks
Parking	Single Garage Attached

Interior

Interior Features	ensuite bathroom
Appliances	Air Conditioning-Central, Dishwasher-Built-In, Dryer, Garage Control, Garage Opener, Hood Fan, Refrigerator, Stove-Electric, Washer
Heating	Forced Air-1, Natural Gas
Fireplace	Yes
Fireplaces	Corner
Stories	4
Has Basement	Yes
Basement	Full, Finished

Exterior

Exterior	Wood, Vinyl
Exterior Features	Fenced, Flat Site, Landscaped, Playground Nearby, Public Transportation, Schools, Shopping Nearby
Roof	Asphalt Shingles
Construction	Wood, Vinyl
Foundation	Concrete Perimeter

Additional Information

Date Listed	June 9th, 2025
Days on Market	82
Zoning	Zone 25
Condo Fee	\$307

DATA IS DEEMED RELIABLE BUT IS NOT GUARANTEED ACCURATE BY THE REALTORS® ASSOCIATION OF EDMONTON. COPYRIGHT 2025 BY THE REALTORS® ASSOCIATION OF EDMONTON. ALL RIGHTS RESERVED.Trademarks are owned or controlled by the Canadian Real Estate Association (CREA) and identify real estate professionals who are members of CREA (REALTOR®, REALTORS®) and/or the quality of services they provide (MLS®, Multiple Listing Service®)

Listing information last updated on August 30th, 2025 at 5:47pm MDT