

## \$239,900 - 15739 121 Street, Edmonton

MLS® #E4444242

**\$239,900**

3 Bedroom, 1.50 Bathroom, 1,615 sqft

Condo / Townhouse on 0.00 Acres

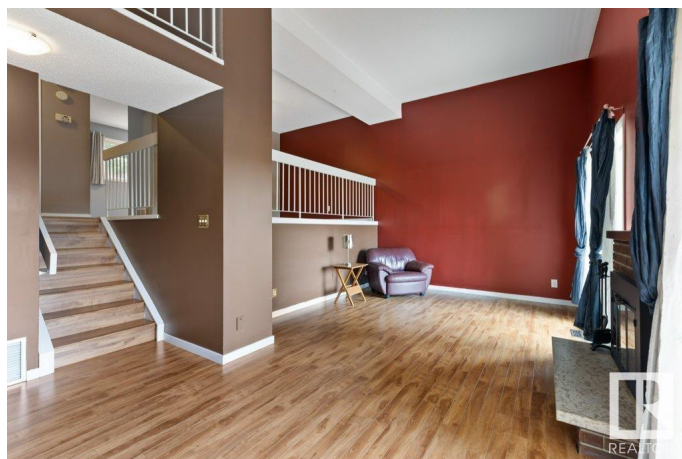
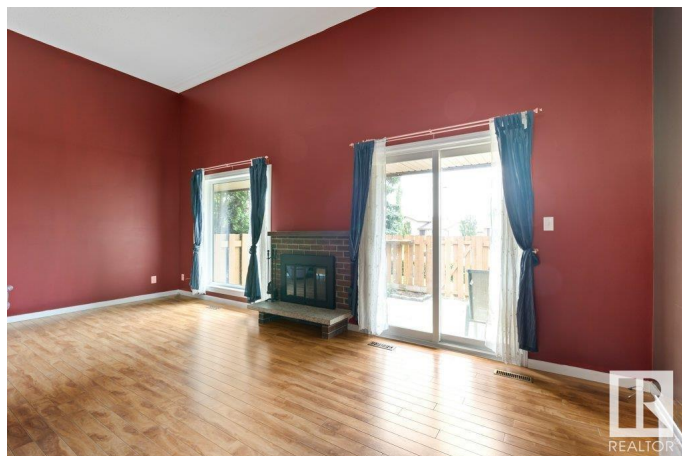
Dunluce, Edmonton, AB

Welcome to this bright & beautifully maintained end-unit townhouse with sunny southwest exposure in the desirable North Park Village complex. Nestled among mature trees & lush landscaping, this home offers a perfect blend of space, comfort & convenience—just minutes to all amenities. Step into the generous front entry with direct access to the attached garage. The unique 4-level split design allows for separation & flow. The inviting living room boasts large windows, a cozy wood-burning fireplace & walkout to the backyard—great for entertaining or relaxing. A few steps up, the dining area overlooks the living room & connects to the spacious kitchen, ideal for family meals or gatherings. A dedicated laundry room on this level adds function. Upstairs, find 3 well-sized bedrooms, including a primary suite with private 2-piece ensuite & a full 4-piece bath. A fantastic opportunity for first-time buyers, families, or anyone seeking a peaceful, well-run complex with room to grow.

Built in 1976

### Essential Information

MLS® #	E4444242
Price	\$239,900
Bedrooms	3



Bathrooms	1.50
Half Baths	3
Square Footage	1,615
Acres	0.00
Year Built	1976
Type	Condo / Townhouse
Sub-Type	Townhouse
Style	5 Level Split
Status	Active

### Community Information

Address	15739 121 Street
Area	Edmonton
Subdivision	Dunluce
City	Edmonton
County	ALBERTA
Province	AB
Postal Code	T5X 2S1

### Amenities

Amenities	Parking-Visitor, Patio, See Remarks
Parking	Single Garage Attached

### Interior

Interior Features	ensuite bathroom
Appliances	Dishwasher-Built-In, Dryer, Garage Control, Garage Opener, Microwave Hood Fan, Refrigerator, Stove-Electric, Washer, Window Coverings
Heating	Forced Air-1, Natural Gas
Fireplace	Yes
Fireplaces	Brick Facing
Stories	5
Has Basement	Yes
Basement	Full, Finished

### Exterior

Exterior	Wood, Brick
Exterior Features	Fenced, Golf Nearby, Landscaped, Playground Nearby, Public Transportation, Schools, Shopping Nearby
Roof	Asphalt Shingles

Construction	Wood, Brick
Foundation	Concrete Perimeter

**Additional Information**

Date Listed	June 25th, 2025
Days on Market	9
Zoning	Zone 27
Condo Fee	\$425

DATA IS DEEMED RELIABLE BUT IS NOT GUARANTEED ACCURATE BY THE REALTORS® ASSOCIATION OF EDMONTON. COPYRIGHT 2025 BY THE REALTORS® ASSOCIATION OF EDMONTON. ALL RIGHTS RESERVED.Trademarks are owned or controlled by the Canadian Real Estate Association (CREA) and identify real estate professionals who are members of CREA (REALTOR®, REALTORS®) and/or the quality of services they provide (MLS®, Multiple Listing Service®)

Listing information last updated on July 4th, 2025 at 8:47am MDT