

## \$389,900 - 614 Woodbridge Way, Sherwood Park

MLS® #E4447129

**\$389,900**

3 Bedroom, 2.50 Bathroom, 1,853 sqft

Condo / Townhouse on 0.00 Acres

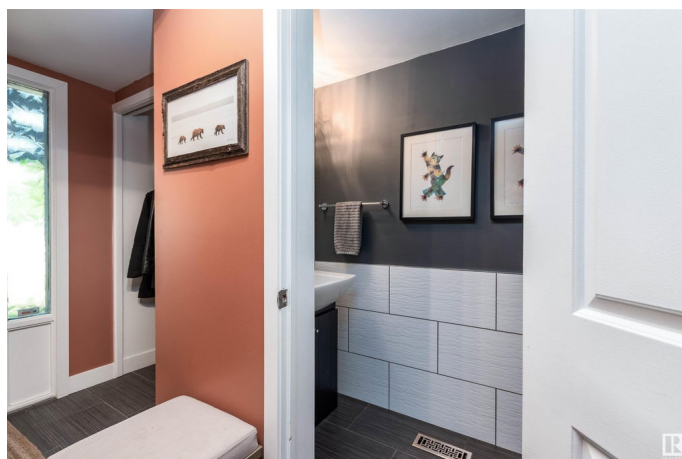
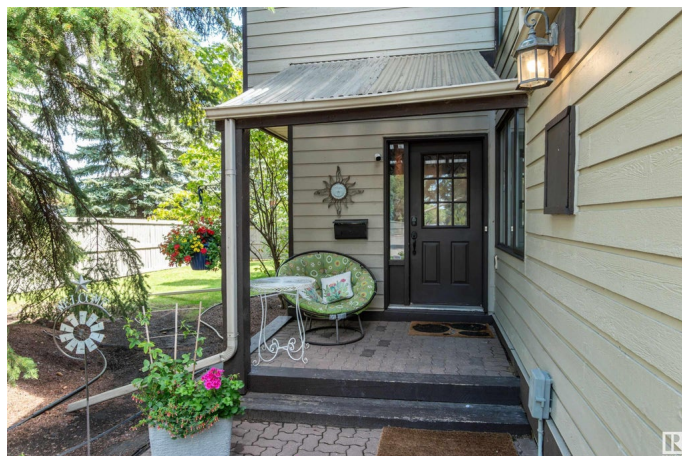
Woodbridge Farms, Sherwood Park, AB

Welcome home to this Woodbridge Farms established executive lifestyle townhome. This tastefully upgraded end unit is spacious, bright and super convenient in the heart of the Park close to shopping, schools and transportation, trails and greenspace. Large eat-in kitchen with tons of storage, dining area with sunken family room (9ft ceilings). Windows galore! Primary bedroom has a double closet, private 4 piece bathroom and patio with west facing exposure. Two additional HUGE bedrooms plus 4 piece bathroom with jetted tub. Ample storage in the basement with fully finished flex room plus laundry. Single attached garage with new insulated door. Private outside living area with natural gas hookup and freshly painted deck. Private pickleball/tennis courts for these summer days!

Built in 1979

### Essential Information

MLS® #	E4447129
Price	\$389,900
Bedrooms	3
Bathrooms	2.50
Full Baths	2
Half Baths	1
Square Footage	1,853
Acres	0.00



Year Built	1979
Type	Condo / Townhouse
Sub-Type	Townhouse
Style	2 Storey
Status	Active

### Community Information

Address	614 Woodbridge Way
Area	Sherwood Park
Subdivision	Woodbridge Farms
City	Sherwood Park
County	ALBERTA
Province	AB
Postal Code	T8A 4E4

### Amenities

Amenities	Ceiling 9 ft., Closet Organizers, Deck, Detectors Smoke, Low Flow Faucets/Shower, Low Flw/Dual Flush Toilet, No Smoking Home, Parking-Visitor, Patio, Tennis Courts, Vacuum System-Roughed-In, Natural Gas BBQ Hookup
Parking Spaces	1
Parking	Single Garage Attached

### Interior

Interior Features	ensuite bathroom
Appliances	Dishwasher-Built-In, Dryer, Garage Control, Garage Opener, Hood Fan, Refrigerator, Stove-Electric, Washer, Window Coverings, TV Wall Mount
Heating	Forced Air-1, Natural Gas
Stories	3
Has Basement	Yes
Basement	Full, Partially Finished

### Exterior

Exterior	Wood
Exterior Features	Corner Lot, Fenced, Flat Site, Low Maintenance Landscape, Private Setting, Schools, Shopping Nearby, See Remarks
Roof	Cedar Shakes
Construction	Wood
Foundation	Concrete Perimeter

**Additional Information**

Date Listed	July 10th, 2025
Days on Market	4
Zoning	Zone 25
Condo Fee	\$620

DATA IS DEEMED RELIABLE BUT IS NOT GUARANTEED ACCURATE BY THE REALTORS® ASSOCIATION OF EDMONTON. COPYRIGHT 2025 BY THE REALTORS® ASSOCIATION OF EDMONTON. ALL RIGHTS RESERVED.Trademarks are owned or controlled by the Canadian Real Estate Association (CREA) and identify real estate professionals who are members of CREA (REALTOR®, REALTORS®) and/or the quality of services they provide (MLS®, Multiple Listing Service®)

Listing information last updated on July 14th, 2025 at 4:02am MDT