

\$749,900 - 9720 65 Avenue, Edmonton

MLS® #E4447435

\$749,900

3 Bedroom, 3.00 Bathroom, 2,560 sqft

Single Family on 0.00 Acres

Hazeldean, Edmonton, AB

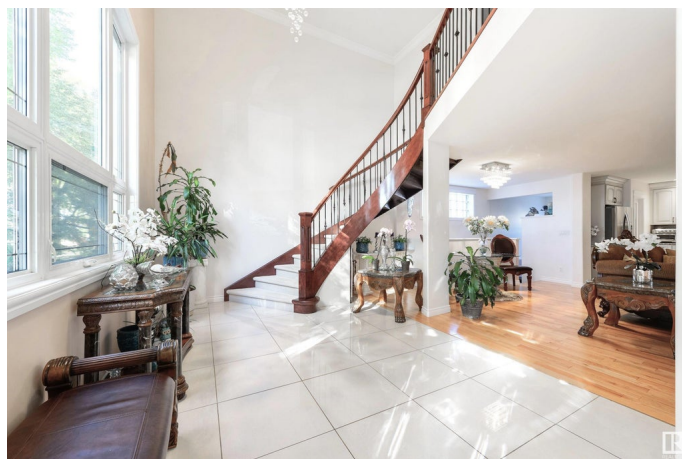
Luxury Living in the desirable community of Hazeldean! This 2560 sqft 3 bedroom, 3 bathroom 2 storey show stopper is situated steps away from the Hazeldean park, school, & market. Embrace the stunning curved staircase w/ soaring ceilings! High quality custom finishes throughout! Just over 13 years ago the original home was taken down to the studs, a main floor addition & a complete 2nd storey has been added. Stunning white kitchen w/ island & walk-in pantry. Formal dining room for large gatherings. Beautiful custom fireplace in living room. Main floor bedroom w/walk-in closet & full bathroom! Upstairs takes you to the exquisite Primary Bedroom w/ a huge window & vaulted ceilings. Massive walk-in closet & ensuite w/ a custom tiled shower. Upstairs bonus room & laundry! Low maintenance deck w/ gazebo in your private backyard oasis . Double garage with lots of additional parking space. Walking distance to the Millcreek Ravine with easy access to the UofA, Whyte Avenue, Southgate & all amenities! Won't last!

Built in 1955

Essential Information

MLS® # E4447435

Price \$749,900



Bedrooms	3
Bathrooms	3.00
Full Baths	3
Square Footage	2,560
Acres	0.00
Year Built	1955
Type	Single Family
Sub-Type	Detached Single Family
Style	2 Storey
Status	Active

Community Information

Address	9720 65 Avenue
Area	Edmonton
Subdivision	Hazeldean
City	Edmonton
County	ALBERTA
Province	AB
Postal Code	T6E 0K6

Amenities

Amenities	Closet Organizers, No Smoking Home, Infill Property
Parking Spaces	5
Parking	Double Garage Detached, Insulated

Interior

Interior Features	ensuite bathroom
Appliances	Dishwasher-Built-In, Dryer, Hood Fan, Refrigerator, Storage Shed, Stove-Electric, Washer, Water Softener, See Remarks
Heating	Forced Air-1, In Floor Heat System, Natural Gas
Fireplace	Yes
Fireplaces	Mantel
Stories	2
Has Basement	Yes
Basement	Full, Partially Finished

Exterior

Exterior	Wood, Stucco
Exterior Features	Fenced, Landscaped

Roof	Asphalt Shingles
Construction	Wood, Stucco
Foundation	Concrete Perimeter

School Information

Elementary	Hazeldean School
Middle	J.H Picard School
High	Strathcona High School

Additional Information

Date Listed	July 9th, 2025
Days on Market	54
Zoning	Zone 17

DATA IS DEEMED RELIABLE BUT IS NOT GUARANTEED ACCURATE BY THE REALTORS® ASSOCIATION OF EDMONTON. COPYRIGHT 2025 BY THE REALTORS® ASSOCIATION OF EDMONTON. ALL RIGHTS RESERVED. Trademarks are owned or controlled by the Canadian Real Estate Association (CREA) and identify real estate professionals who are members of CREA (REALTOR®, REALTORS®) and/or the quality of services they provide (MLS®, Multiple Listing Service®)

Listing information last updated on September 1st, 2025 at 2:47pm MDT