

## \$599,900 - 618 Layton Court, Edmonton

MLS® #E4455262

**\$599,900**

4 Bedroom, 2.00 Bathroom, 1,798 sqft

Single Family on 0.00 Acres

Leger, Edmonton, AB

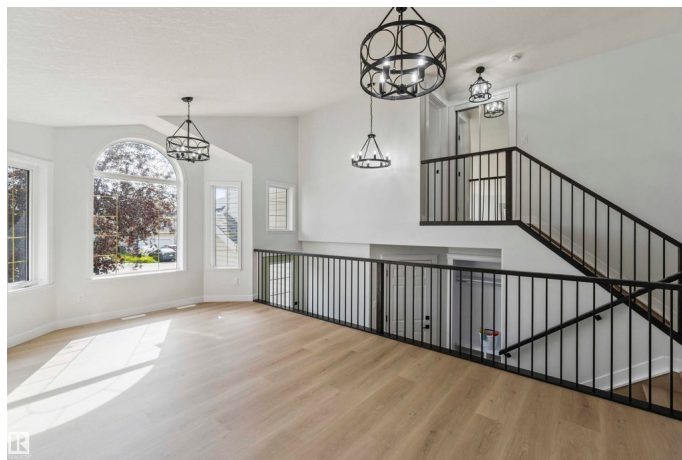
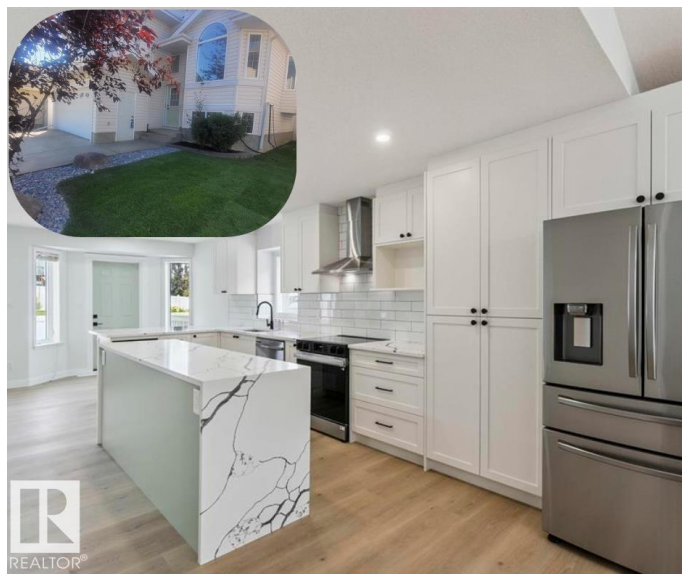
This 1700 sq ft, 4 bedroom home has been professionally RENOVATED and LANDSCAPED. Upon entering; you're greeted with rustic wide-plank vinyl floors, a stunning stain-grade railing, and an open and bright living area w/ new light fixtures. The classy kitchen encompasses tons of cabinet and counterspace; including a floor-to-ceiling pantry, an island with dual waterfalls, a breakfast bar, stainless steel appliances, pot lights, and a subway tile backsplash. The main level is finished off with a large living room, with gas F/P, 3 large bedrooms, and a beautiful 4 pc. main bath w/ a custom tile shower w/ rain showerhead and wand. The massive and private primary bedroom can be found on the upper level, offering a Walk-in closet and 4 pc ensuite w/ a jetted jacuzzi tub/shower. The unspoiled basement is ready for your custom design. This home has a fully -fenced yard, deck, A/C and is situated steps away from the TRAIL-SYSTEM leading to the Whitemud Ravine. Close to shopping, schools, and green space.

Built in 2001

### Essential Information

MLS® # E4455262

Price \$599,900



Bedrooms	4
Bathrooms	2.00
Full Baths	2
Square Footage	1,798
Acres	0.00
Year Built	2001
Type	Single Family
Sub-Type	Detached Single Family
Style	Bi-Level
Status	Active

### **Community Information**

Address	618 Layton Court
Area	Edmonton
Subdivision	Leger
City	Edmonton
County	ALBERTA
Province	AB
Postal Code	T6R 2S9

### **Amenities**

Amenities	Air Conditioner, Deck, Hot Water Natural Gas, Vaulted Ceiling, Vinyl Windows
Parking	Double Garage Attached

### **Interior**

Interior Features	ensuite bathroom
Appliances	Air Conditioning-Central, Dishwasher-Built-In, Dryer, Garage Control, Hood Fan, Stove-Electric, Washer, Refrigerators-Two
Heating	Forced Air-1, Natural Gas
Stories	2
Has Basement	Yes
Basement	Full, Unfinished

### **Exterior**

Exterior	Wood, Vinyl
Exterior Features	Cul-De-Sac, Fenced, Landscaped, Schools
Roof	Asphalt Shingles
Construction	Wood, Vinyl

Foundation                      Concrete Perimeter

**Additional Information**

Date Listed                      August 29th, 2025

Days on Market                1

Zoning                            Zone 14

DATA IS DEEMED RELIABLE BUT IS NOT GUARANTEED ACCURATE BY THE REALTORS® ASSOCIATION OF EDMONTON. COPYRIGHT 2025 BY THE REALTORS® ASSOCIATION OF EDMONTON. ALL RIGHTS RESERVED.Trademarks are owned or controlled by the Canadian Real Estate Association (CREA) and identify real estate professionals who are members of CREA (REALTOR®, REALTORS®) and/or the quality of services they provide (MLS®, Multiple Listing Service®)

Listing information last updated on August 30th, 2025 at 1:17am MDT