

## \$419,900 - 271 Summerton Crescent, Sherwood Park

MLS® #E4455991

**\$419,900**

2 Bedroom, 2.50 Bathroom, 1,409 sqft

Single Family on 0.00 Acres

Summerwood, Sherwood Park, AB

Step into this bright and sunny home that's full of charm and ready to impress! Featuring 2 spacious bedrooms, 3 bathrooms, and a versatile bonus room, this home blends comfort and functionality. The open-concept main floor is warm and inviting, centered around a cozy great room with a corner gas fireplace with tile. The stylish kitchen boasts rich dark cabinetry, new appliances, an eating bar, corner pantry, and a generous dining nook that opens to your huge south-facing 3-tier treated wood deck with gas BBQ hookup—ideal for outdoor gatherings! Enjoy LVP floors (2024), AC (2020), and large windows that flood the space with natural light. Upstairs, the spacious primary suite offers a walk-in closet and private ensuite, while the additional bedroom and bonus room provide flexibility. Located on a quiet street near a park, spray park, and close to amenities. The unfinished basement with roughed-in plumbing offers endless potential. Don't miss this gem—it's a must-see

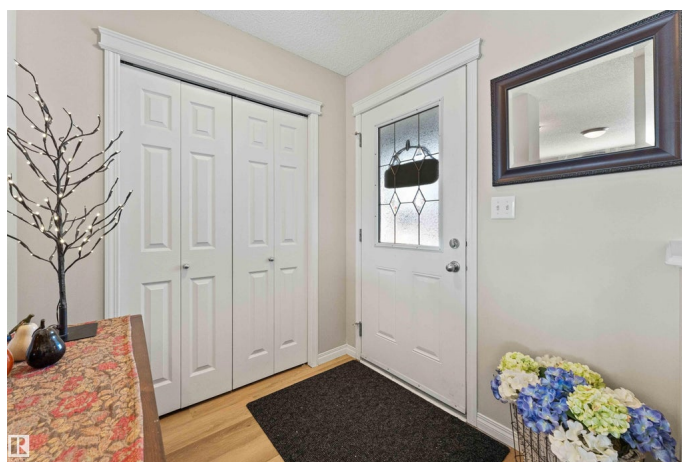
Built in 2006

### Essential Information

MLS® # E4455991

Price \$419,900

Bedrooms 2



Bathrooms	2.50
Full Baths	2
Half Baths	1
Square Footage	1,409
Acres	0.00
Year Built	2006
Type	Single Family
Sub-Type	Half Duplex
Style	2 Storey
Status	Active

### Community Information

Address	271 Summerton Crescent
Area	Sherwood Park
Subdivision	Summerwood
City	Sherwood Park
County	ALBERTA
Province	AB
Postal Code	T8H 2V5

### Amenities

Amenities	Deck, No Smoking Home
Parking	Single Garage Attached

### Interior

Interior Features	ensuite bathroom
Appliances	Dishwasher-Built-In, Dryer, Microwave Hood Fan, Refrigerator, Stove-Electric, Washer, Window Coverings
Heating	Forced Air-1, Natural Gas
Stories	2
Has Basement	Yes
Basement	Full, Unfinished

### Exterior

Exterior	Wood, Vinyl
Exterior Features	Fenced, Golf Nearby, Landscaped, Playground Nearby, Public Transportation, Schools, Shopping Nearby, Sloping Lot
Roof	Asphalt Shingles
Construction	Wood, Vinyl

Foundation                      Concrete Perimeter

**Additional Information**

Date Listed                      September 4th, 2025

Days on Market                3

Zoning                            Zone 25

DATA IS DEEMED RELIABLE BUT IS NOT GUARANTEED ACCURATE BY THE REALTORS® ASSOCIATION OF EDMONTON. COPYRIGHT 2025 BY THE REALTORS® ASSOCIATION OF EDMONTON. ALL RIGHTS RESERVED.Trademarks are owned or controlled by the Canadian Real Estate Association (CREA) and identify real estate professionals who are members of CREA (REALTOR®, REALTORS®) and/or the quality of services they provide (MLS®, Multiple Listing Service®)

Listing information last updated on September 7th, 2025 at 4:47pm MDT