

Courtesy Of Mike Sheret Of RE/MAX River City

\$145,000 - 308 11218 80 Street, Edmonton

MLS® #E4466059

\$145,000

1 Bedroom, 1.00 Bathroom, 775 sqft
Condo / Townhouse on 0.00 Acres

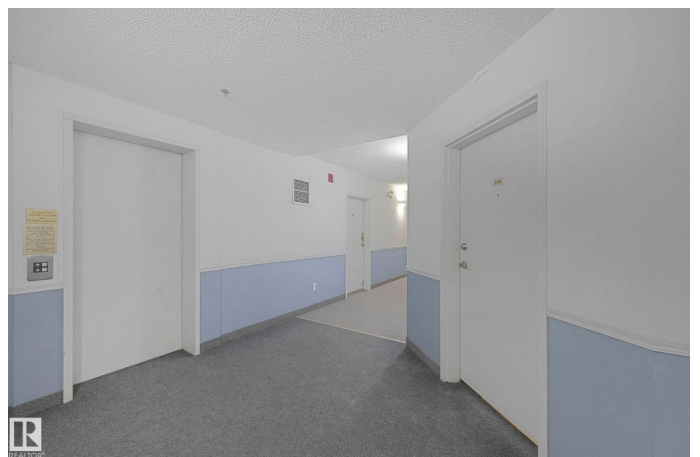
Cromdale, Edmonton, AB

This beautifully upgraded 3rd-floor condo offers modern finishes and an unbeatable walkable location near the LRT, transit, Save-On-Foods, Commonwealth Stadium, Borden Park, Concordia University and the River Valley. The unit features updated flooring, fresh paint, modern lighting and a stylish kitchen with SS appliances. The open living and dining space leads to a huge private balcony, perfect for relaxing, entertaining or enjoying the treed surroundings. The spacious, king-sized primary bedroom offers excellent closet space and plenty of natural light, while the den makes an ideal office or flex room. The fully updated 4-piece bathroom showcases modern tilework, a newer vanity and a clean, contemporary design. Enjoy the convenience of in-suite laundry and impressive storage throughout. Located in a well-run building with many long-term residents, this move-in-ready condo is ideal for buyers or investors seeking a clean, modern home in a vibrant, amenity-rich neighbourhood.

Built in 1995

Essential Information

MLS® #	E4466059
Price	\$145,000
Bedrooms	1



Bathrooms	1.00
Full Baths	1
Square Footage	775
Acres	0.00
Year Built	1995
Type	Condo / Townhouse
Sub-Type	Lowrise Apartment
Style	Single Level Apartment
Status	Active

Community Information

Address	308 11218 80 Street
Area	Edmonton
Subdivision	Cromdale
City	Edmonton
County	ALBERTA
Province	AB
Postal Code	T5B 4V9

Amenities

Amenities	No Animal Home, No Smoking Home, Parking-Visitor, Security Door, Sprinkler System-Fire, Storage-In-Suite, See Remarks
Parking Spaces	1
Parking	Stall

Interior

Appliances	Dishwasher-Built-In, Dryer, Microwave Hood Fan, Refrigerator, Stove-Electric, Washer
Heating	Hot Water, Natural Gas
# of Stories	4
Stories	1
Has Basement	Yes
Basement	None, No Basement

Exterior

Exterior	Wood, Stucco
Exterior Features	Flat Site, Low Maintenance Landscape, Playground Nearby, Public Swimming Pool, Public Transportation, Schools, Shopping Nearby, See Remarks

Roof	Asphalt Shingles
Construction	Wood, Stucco
Foundation	Concrete Perimeter

School Information

Elementary	Virginia Park School
Middle	Highlands School
High	Eastglen School

Additional Information

Date Listed	November 18th, 2025
Days on Market	1
Zoning	Zone 09
Condo Fee	\$518

DATA IS DEEMED RELIABLE BUT IS NOT GUARANTEED ACCURATE BY THE REALTORS® ASSOCIATION OF EDMONTON. COPYRIGHT 2025 BY THE REALTORS® ASSOCIATION OF EDMONTON. ALL RIGHTS RESERVED. Trademarks are owned or controlled by the Canadian Real Estate Association (CREA) and identify real estate professionals who are members of CREA (REALTOR®, REALTORS®) and/or the quality of services they provide (MLS®, Multiple Listing Service®)

Listing information last updated on November 19th, 2025 at 5:32am MST